



**FISKERIDIREKTORATET**

The Norwegian Directorate of Fisheries



**KYSTVERKET**

The Norwegian Coastal Administration

## **REPORT FROM THE SECTION OF ANALYSIS IN VARDØ**

*This report has been prepared by the Section of Analysis in Vardø.  
Further publication and use of this report is decided by the recipient.*

Our reference: 2020 06 06 "Senator" YLAC

Date of issue: 28 October 2021

### **Recipient:**

This report was requested by the Ministry of Foreign Affairs, the Section for Treaty Law, Environmental Law and Law of the Sea  
The order was received June 19<sup>th</sup> 2020

### **The content of the order:**

The Latvian company SIA North Star has filed for an arbitration case against Norway for the ICSID (International Centre of Settlement of Investment Disputes).

In this regard, the Ministry of Foreign Affairs have ordered an analysis based on AIS- tracking data for the vessels: "Saldus" YL2888, "Solveiga" YL2982, "Solvita" YL2843 and "Senator" YLAC, and their activity concerning snow crab harvesting in the Loop Hole in the Barents Sea.

The analysis shall also include the quantity of snow crab the vessels have caught and the time the vessels have spent respectively on the Norwegian and the Russian Shelves in the Loop Hole with speed < 6 knots.

Executive officer(s): 2001, 2002 and 2007

Phone: + 47 789 89 898

## Summary

### Arrival and harvesting of snow crab

“Senator” arrived in Norway on May 2015. In the period from May 20<sup>th</sup> 2015 until September 8<sup>th</sup> 2016 “Senator” was harvesting snow crab in the Loop Hole area in the Barents Sea.

### Voyages

During this period “Senator” had ten voyages with catches of snow crab. During those ten voyages, “Senator” had five transshipments of snow crab to the reefers “Nikolay Kasatkin” UEFY and “Nadir” UEVR.

“Senator” had one voyage with possible harvesting activity on the Norwegian continental shelf in the Loop Hole. This was on voyage ten, in the period between June 25<sup>th</sup> and July 1<sup>st</sup> in 2016.

### Landing notes

We have registered a total of 10 landing notes for “Senator”, which cover all of the “Senator”’s voyages during which it engaged in the harvesting of snow crab. Additionally, we have registered three landing notes from the reefer “Nadir” UEVR regarding “Senator” and two landing notes from the reefer “Nikolay Kasatkin” UEFY regarding “Senator”. All harvests, both from “Senator” and the reefers were delivered to Båtsfjord Sentralfryselager AS.

### Summary of the “Senator”’s voyages

Figure 1 “Senator” summary all voyages

<b>Senator YLAC</b>		
Hours on Norwegian Shelf < 6 knots	12,6	
Hours on Russian Shelf < 6 knots	9576,39	
Total hours < 6 knots	9588,99	
Percent time on Russian Shelf < 6 knots		99,87 %
Percent time on Norwegian Shelf < 6 knots		0,13 %
Snow crab landed in kilos live weight		1 956 214
to reefer "Nadir"	368 428	
to reefer "Nikolay Kasatkin"	229 998	
to Båtsfjord Sentralfryselager AS	1 357 788	
Total catch Russian shelf	1 953 694	99,87 %
Total catch Norwegian shelf	2 520	0,13 %

The table above shows the summary of all voyages for “Senator” harvesting snow crab in the Loop Hole.

“Senator” had one period of 12,6 hours during which it was engaged in possible snow crab harvesting activity on the Norwegian continental shelf in the Loop Hole.

continental shelf in the Loop Hole. By contrast, the “Senator” spent 9 576,39 hours at a speed of <6 knots on the Russian continental shelf in the Loop Hole engaged in snow crab harvesting. The total number of hours was 9 588,99.

This gives a percent in the Russian continental shelf in the Loop Hole on 99,87 percent and on the Norwegian continental shelf in the Loop Hole on 0,13 percent.

“Senator” landed a total of 1 956 214 kilos snow crab in live weight. The rows also show the quantity transshipped to reefers and delivered in Båtsfjord port.

The last rows show the quantity and percent of catch harvested in the Russian- and the Norwegian continental shelf in the Loop Hole, assuming that snow crab was harvested at a consistent rate. Of the total catch, 1 953 694 kilos were caught in the Russian continental shelf in the Loop Hole and 2 520 kilos (i.e. 0,13%) was caught on the Norwegian continental shelf in the Loop Hole.

Since “Senator” was landing clusters of snow crab, the calculation of live weight is done with factors between 1,66 and 1,61.

After its last delivery of snow crab in September 2016, “Senator” was laid up in Båtsfjord port until October 1<sup>st</sup> 2016. “Senator” had one voyage on the Russian continental shelf in the Loop Hole in October 2016. We assume that “Senator” was removing pots from the Loop Hole. There was no delivery of catch after this voyage.

“Senator” was then laid up in Båtsfjord port until January 14<sup>th</sup> 2017. In the period between January 14<sup>th</sup> and January 18<sup>th</sup> 2017, “Senator” had one voyage to the Fisheries Protection Zone around Svalbard. During this voyage “Senator” was arrested by Norwegian Coast Guard vessel “KV Svalbard” and escorted to Kirkenes port. “Senator” was then laid up in Kirkenes port until March 24<sup>th</sup> 2017. After this time “Senator” have been laid up in Båtsfjord port.

“Senator” has been inspected five times by Norwegian Authorities. The first inspection was done when the vessel was named “Otto” in 2013 and was engaged in prawn fisheries. The second inspection was a Port State Control by the Norwegian Directorate of Fisheries. The last three inspections were done by the Norwegian Coastguard. The latest inspection on February 7<sup>th</sup> 2017 was before “Senator” was going to sea and remove pots. This voyage was never took place.

## Table of contents:

Summary .....	1
Table of contents:.....	3
Pictures and tables .....	5
1. "Senator" YLAC.....	7
1.1 "Senator"'s arrival in Norway.....	8
1.2 "Senator" tracks for snow crab in the Barents Sea .....	9
2. Voyages for "Senator" YLAC .....	10
2.1 "Senator" voyage 1 from May 20 <sup>th</sup> to June 22 <sup>nd</sup> 2015 .....	10
2.1.1 "Senator" summary voyage 1.....	11
2.2 "Senator" voyage 2 from June 24 <sup>th</sup> to September 21 <sup>st</sup> 2015.....	12
2.2.1 "Senator" summary voyage 2.....	13
2.3 "Senator" voyage 3 from September 25 <sup>th</sup> to October 22 <sup>nd</sup> 2015.....	14
2.3.1 "Senator" summary voyage 3.....	15
2.4 "Senator" voyage 4 from October 30 <sup>th</sup> to November 21 <sup>st</sup> 2015.....	16
2.4.1 "Senator" summary voyage 4.....	17
2.5 "Senator" voyage 5 from November 29 <sup>th</sup> to December 28 <sup>th</sup> 2015.....	18
2.6 "Senator" voyage 6 from December 30 <sup>th</sup> 2015 to February 3 <sup>rd</sup> 2016 .....	20
2.6.1 "Senator" summary voyage 6.....	23
2.7 "Senator" voyage 7 from February 9 <sup>th</sup> 2015 to March 15 <sup>th</sup> 2016.....	24
2.7.1 "Senator" summary voyage 7.....	25
2.8 "Senator" voyage 8 from March 18 <sup>th</sup> to April 11 <sup>th</sup> 2016 .....	26
2.8.1 "Senator" summary voyage 8.....	28
2.9 "Senator" voyage 9 from April 15 <sup>th</sup> to May 12 <sup>th</sup> 2016.....	29
2.9.1 "Senator" summary voyage 9.....	30
2.10 "Senator" voyage 10 from May 14 <sup>th</sup> to September 6 <sup>th</sup> 2016 .....	31
2.10.1 "Senator" harvest and transshipment to "Nadir" June 20 <sup>th</sup> 2016.....	32
2.10.2 "Senator" harvest and transshipment to "Nadir" June 30 <sup>th</sup> 2016.....	34
2.10.3 "Senator" transshipment to "Nikolay Kasatkin" July 16 <sup>th</sup> 2016 .....	38
2.10.4 "Senator" transshipment to "Nadir" August 8 <sup>th</sup> 2016.....	40
2.10.4.1 "Senator" summary transshipment August 8 <sup>th</sup> 2016 .....	41
2.10.5 "Senator" landing September 6 <sup>th</sup> 2016 .....	42
2.10.5.1 "Senator" summary of landing September 6 <sup>th</sup> 2016 .....	43
3. "Senator" after ending snow crab harvesting in the Loop Hole .....	44

3.1 “Senator” voyage 11 from October 1 <sup>st</sup> to October 8 <sup>th</sup> 2016 .....	44
3.1.1 “Senator” summary voyage 11.....	46
3.2 “Senator” voyage 12 from January 14 <sup>th</sup> to January 18 <sup>th</sup> 2017.....	47
4. Inspections by Norwegian Authorities .....	49
Attachments .....	49

## Pictures and tables

Figure 1 “Senator” summary all voyages .....	1
Figure 2 “Senator” YLAC .....	7
Figure 3 “Senator” .....	7
Figure 4 “Senator” YLAC voyage to Norway .....	8
Figure 5 “Senator” tracks for snow crab .....	9
Figure 6 “Senator” voyage 1, overview .....	10
Figure 7 “Senator” voyage 1, < 6 knots on the Russian continental shelf .....	10
Figure 8 “Senator” summary voyage 1 .....	11
Figure 9 “Senator” voyage 2, overview .....	12
Figure 10 “Senator” voyage 2, < 6 knots on the Russian continental shelf .....	12
Figure 11 “Senator” summary voyage 2 .....	13
Figure 12 “Senator” voyage 3, overview .....	14
Figure 13 “Senator” voyage 3, < 6 knots on the Russian continental shelf .....	14
Figure 14 “Senator” summary voyage 3 .....	15
Figure 15 “Senator” voyage 4, overview .....	16
Figure 16 “Senator” voyage 4, < 6 knots on the Russian continental shelf .....	16
Figure 17 “Senator” summary voyage 4 .....	17
Figure 18 “Senator” voyage 5, overview .....	18
Figure 19 “Senator” voyage 5, < 6 knots on the Russian continental shelf .....	18
Figure 20 “Senator” summary voyage 5 .....	19
Figure 21 “Senator” voyage 6, overview .....	20
Figure 22 “Senator” voyage 6, < 6 knots on the Russian continental shelf .....	21
Figure 23 “Senator” voyage 6 < 6 knots on the Norwegian continental shelf .....	21
Figure 24 “Senator” voyage 6, < 1 knots AIS-positions on the Norwegian continental shelf .....	22
Figure 25 “Senator” voyage 6, < 6 knots on the Norwegian continental shelf .....	22
Figure 26 “Senator” voyage 6, < 6 knots AIS-positions on the Norwegian continental shelf .....	23
Figure 27 “Senator” summary voyage 6 .....	23
Figure 28 “Senator” voyage 7, overview .....	24
Figure 29 “Senator” voyage 7, < 6 knots on the Russian continental shelf .....	24
Figure 30 “Senator” summary voyage 7 .....	25
Figure 31 “Senator” voyage 8, overview .....	26
Figure 32 “Senator” voyage 8, < 6 knots on the Russian continental shelf .....	26
Figure 33 “Senator” voyage 8, < 6 knots on the Norwegian continental shelf .....	27
Figure 34 “Senator” voyage 8, < 6 knots AIS-positions on the Norwegian continental shelf .....	27
Figure 35 “Senator” summary voyage 8 .....	28
Figure 36 “Senator” voyage 9, overview .....	29
Figure 37 “Senator” voyage 9, < 6 knots on the Russian continental shelf .....	29
Figure 38 “Senator” summary voyage 9 .....	30
Figure 39 “Senator” voyage 10, overview .....	31
Figure 40 “Senator” tracks from May 14 <sup>th</sup> to June 22 <sup>th</sup> 2016, overview .....	32
Figure 41 “Senator” from May 14 <sup>th</sup> to June 22 <sup>nd</sup> 2016, < 6 knots on the Russian continental shelf .....	32
Figure 42 “Senator” summary for transshipment June 20 <sup>th</sup> 2016 .....	33
Figure 43 “Senator” tracks from June 23 <sup>rd</sup> to June 30 <sup>th</sup> 2016, overview .....	34
Figure 44 “Senator” from June 22 <sup>th</sup> to June 25 <sup>th</sup> 2016, < 6 knots on the Russian continental shelf .....	34
Figure 45 “Senator” from June 25 <sup>th</sup> to June 26 <sup>th</sup> 2016, < 6 knots on the Norwegian continental shelf .....	35

Figure 46 “Senator” from June 26 <sup>th</sup> to June 28 <sup>th</sup> 2016, < 6 knots on the Russian continental shelf.....	35
Figure 47 “Senator” from June 26 <sup>th</sup> to June 28 <sup>th</sup> 2016, < 6 knots on the Norwegian continental shelf	36
Figure 48 “Senator” from June 29 <sup>th</sup> to June 30 <sup>th</sup> 2016, < 6 knots on the Russian continental shelf.....	36
Figure 49 “Senator” summary for the transshipment June 30 <sup>th</sup> 2016 .....	37
Figure 50 “Senator” from June 30 <sup>th</sup> to July 17 <sup>th</sup> 2016, overview .....	38
Figure 51 “Senator” from June 30 <sup>th</sup> to July 17 <sup>th</sup> 2016, < 6 knots on the Russian continental shelf .....	38
Figure 52 “Senator” summary transshipment July 16 <sup>th</sup> 2016 .....	39
Figure 53 “Senator” from July 17 <sup>th</sup> to August 9 <sup>th</sup> 2016, overview .....	40
Figure 54 “Senator” from July 17 <sup>th</sup> to August 9 <sup>th</sup> 2016, < 6 knots on the Russian continental shelf.....	40
Figure 55 “Senator” summary transshipment August 8 <sup>th</sup> 2016 .....	41
Figure 56 “Senator” from August 8 <sup>th</sup> to September 6 <sup>th</sup> 2016, overview.....	42
Figure 57 “Senator” from August 8 <sup>th</sup> to September 3 <sup>rd</sup> 2016, < 6 knots on the Russian continental shelf .....	42
Figure 58 “Senator” summary landing September 6 <sup>th</sup> 2016 .....	43
Figure 59 “Senator” voyage 11, overview .....	44
Figure 60 “Senator” voyage 11, < 6 knots on the Russian continental shelf .....	45
Figure 61 “Senator” voyage 11, < 6 knots on the Norwegian continental shelf .....	45
Figure 62 “Senator” summary voyage 11.....	46
Figure 63 “Senator” voyage 12, overview .....	47
Figure 64 “Senator” voyage 12, Fisheries Protection Zone around Svalbard .....	47
Figure 65 “Senator” voyage 12, Norwegian continental shelf in the Loop Hole.....	48
Figure 66 “Senator” from Kirkenes to Båtsfjord .....	48
Figure 67 “Senator” inspections by Norwegian Authorities .....	49

## 1. “Senator” YLAC

The object of this report is the vessel “Senator” with IMO ship identification number 6812986, MMSI 275171000 and callsign YLAC. “Senator’s” gross tonnage is 1 216 metric tons and length overall is 61,17 meters.

Figur 2 “Senator” YLAC



Photo of “Senator” YLAC

Figure 3 “Senator”

Registration

Last Updated: 12 Dec 2018

Name:

Senator

Since: Before 25 Sep 2014

Name History

Name	From	Until
Otto	25 Apr 2000	24 Sep 2014
Prestland	01 Sep 1997	24 Apr 2000
Dalborg	After 01 Aug 1995	31 Aug 1997
Ottar Birting	01 Nov 1993	31 Jul 1995
Safco Endeavour	After 01 Jan 1991	31 Oct 1993
Birting	After 01 Jan 1989	31 Dec 1990
Ottar Birting	After 01 Jan 1968	31 Dec 1988

Flag:

Latvia

Since: 25 Apr 2000

Flag Official Number:

Flag History

Flag	Flag Official Number	Call Sign	MMSI	Port Of Registry	From	Until
FRO		OW2116	231062000		01 Sep 1997	24 Apr 2000
ISL		TFTB	251235000		After 01 Jul 1995	31 Aug 1997
PAN					After 07 Dec 1993	On 01 Jul 1995
GBR					On 11 Jan 1990	On 07 Dec 1992
NOR					After 01 Jan 1989	Before 11 Jan 1990

Call Sign:

YLAC

IMO:

6812986

MMSI:

275171000

Port Of Registry:

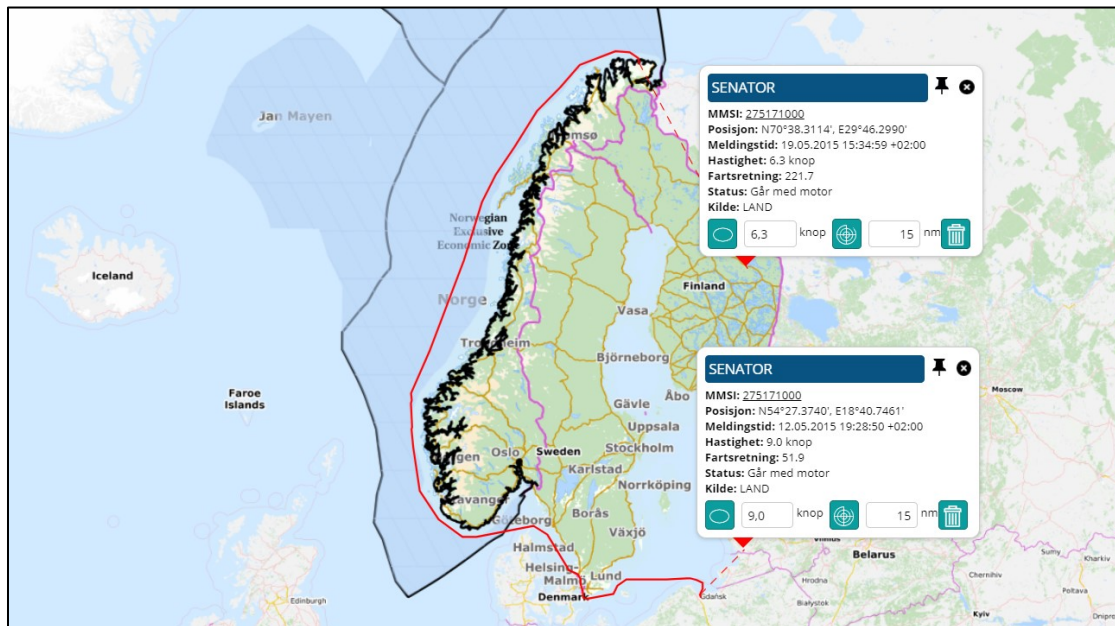
Riga

The figure above shows the name history and the flag history for “Senator”. “Senator” has been a Latvian-flagged vessel since April 2000. Vessel information has been obtained from Lloyd’s List Intelligence.



## 1.1 “Senator”’s arrival in Norway

Figure 4 “Senator” YLAC voyage to Norway



“Senator” arrived in Norway on May 19<sup>th</sup> 2015.

The first AIS-position for “Senator” in 2015 was registered on January 1<sup>st</sup> in Gdansk, Poland.

“Senator” left Gdansk May 12<sup>th</sup> and started its voyage to Norway.

From May 2015 until September 2016 “Senator” was engaged in harvesting snow crab in the Loop Hole in the Barents Sea.

“Senator” did not land live snow crab, but processed and froze snow crab “clusters” whilst at sea. Most of the frozen snow crab was landed by “Senator” itself at Båtsfjord Sentralfryselager AS.

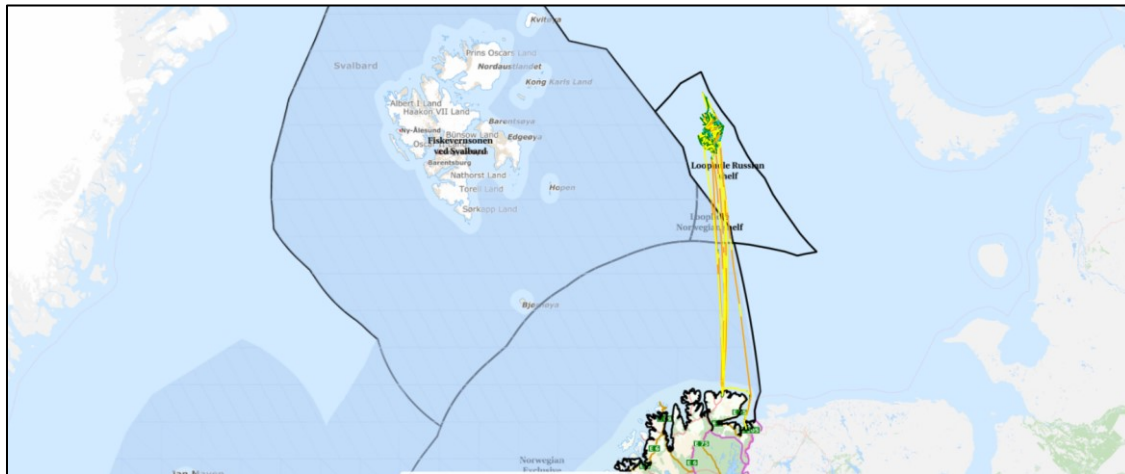
“Senator” had a total of 10 landings of snow crab to Båtsfjord Sentralfryselager AS. The rest of the snow crab caught by “Senator” was transshipped at sea to the reefers “Nikolay Kasatkin” UEFY and “Nadir” UEVR. “Senator” had a total of five transshipments to these two reefers. All landings from Nikolay Kasatkin” UEFY and “Nadir” UEVR also took place in Båtsfjord port (Båtsfjord Sentralfryselager AS).

In total, “Senator” landed 1 956 214 kilos of snow crab. The weight of the catch is given in live weight. Live weight is based on factor 1,66 and 1,61 and based on factor used by the vessel in the Portstate Control form.

Of the total quantity of snow crab 2 520 kilos were caught on the Norwegian continental shelf in the Loop Hole.

## 1.2 “Senator” tracks for snow crab in the Barents Sea

Figure 5 “Senator” tracks for snow crab



The image above shows all tracks for “Senator” in the Barents Sea in the period from May 2015 until the end of September 2016. “Senator” ‘s first delivery (a transshipment) of snow crab was done on July 20<sup>th</sup> 2015 and the last delivery of snow crab was done on September 6<sup>th</sup> 2016.

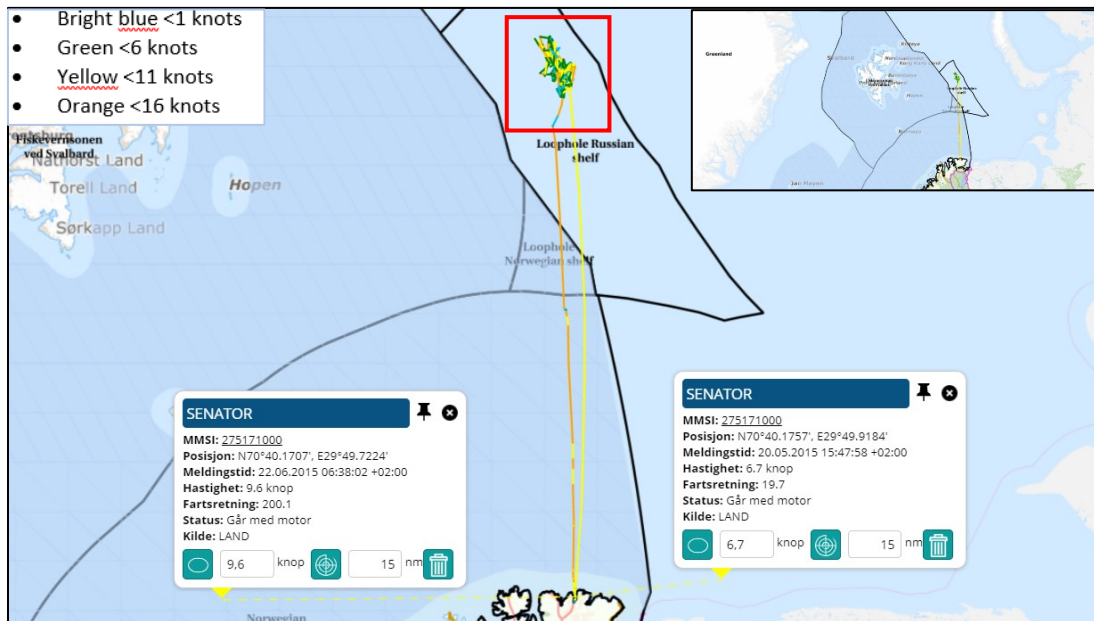
As explained the summary report: Orange colored tracks represent speeds of between 11 and 16 knots, yellow-colored tracks reflect speeds of between 6 and 11 knots, green colored tracks reflect speeds of between 1 and 6 knots and bright blue colored tracks reflect a speed of < 1 knot. Normally, speeds of < 6 knots (green and light blue tracks) indicate harvesting operations.

Each voyage regarding snow crab harvesting will be shown in the pictures in Section 2 of this report. The movements of “Senator” after ending its snow crab harvesting operations is included in Section 3 and inspections performed by the Norwegian Authorities are included in Chapter 4.

## 2. Voyages for “Senator” YLAC

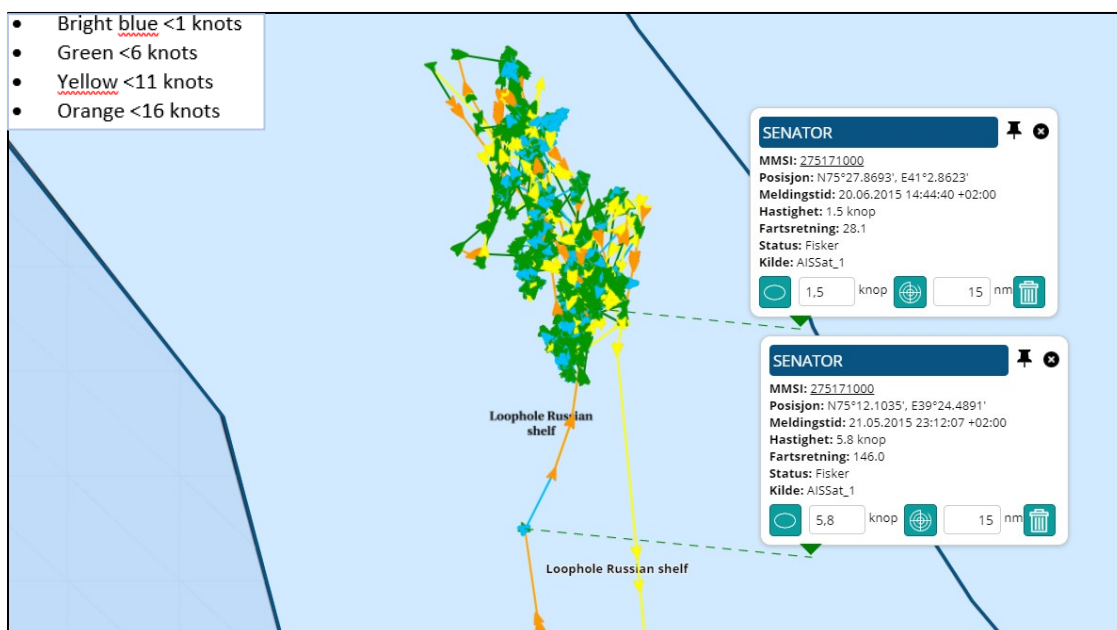
### 2.1 “Senator” voyage 1 from May 20<sup>th</sup> to June 22<sup>nd</sup> 2015

Figure 6 “Senator” voyage 1, overview



Voyage 1, overview. “Senator” left Båtsfjord port on May 20<sup>th</sup> 2015 and returned to Båtsfjord port on June 22<sup>th</sup> 2015. On arrival, “Senator” landed 146 105 kilos of snow crab in live weight. The track shows that “Senator” sailed past the water column above the Norwegian continental shelf in the Loop Hole on this voyage, northbound and southbound and did not engage in any snow crab harvesting there.

Figure 7 “Senator” voyage ,1 < 6 knots on the Russian continental shelf



Russian continental shelf of the Loop Hole. "Senator" was speeding < 6 knots in the period from May 21<sup>th</sup> 2015 time 23:12 until June 20<sup>th</sup> 2015 time 14:44.

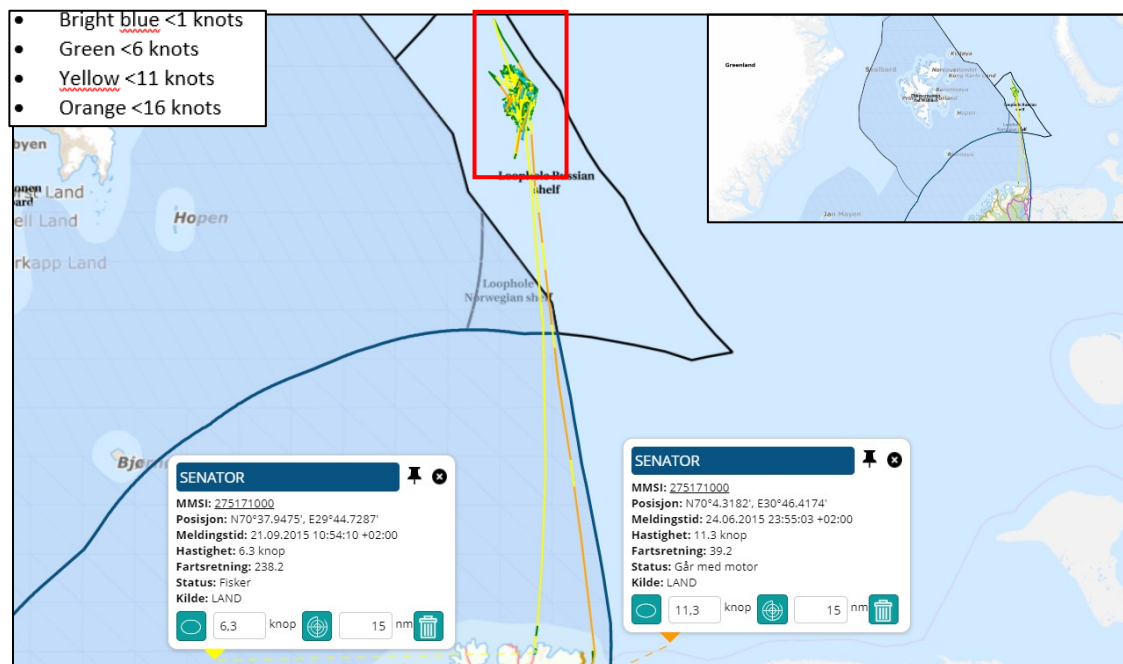
### 2.1.1 "Senator" summary voyage 1

Figure 8 "Senator" summary voyage 1

Voyage started from Båtsfjord port	Voyage ended in Båtsfjord port	
20.05.2015	22.06.2015	
Entered Loophole Norwegian Shelf	21.05.2015 12:50	
Left Loophole Norwegian Shelf	21.05.2015 17:40	
Time on Norwegian Shelf (days:hours:minutes)		00:04:50
Period with speed < 6 knots from		
Period with speed < 6 knots to		
Time with speed < 6 knots (days:hours:minutes)		00:00:00
Entered Loophole Russian Shelf	21.05.2015 17:40	
Left Loophole Russian Shelf	21.06.2015 03:42	
Time on Russian Shelf (days:hours:minutes)		30:10:01
Period with speed < 6 knots from	21.05.2015 23:12	
Period with speed < 6 knots to	20.06.2015 14:44	
Time with speed < 6 knots (days:hours:minutes)		29:15:32
Entered Loophole Norwegian Shelf	21.06.2015 03:42	
Left Loophole Norwegian Shelf	21.06.2015 06:28	
Time on Norwegian Shelf (days:hours:minutes)		00:02:46
Period with speed < 6 knots from		
Period with speed < 6 knots to		
Time with speed < 6 knots (days:hours:minutes)		00:00:00
Hours on Norwegian Shelf < 6 knots	0	
Hours on Russian Shelf < 6 knots	711,32	
Total hours < 6 knots	711,32	
Percent time on Russian Shelf < 6 knots	100,00 %	
Percent time on Norwegian Shelf < 6 knots	0,00 %	
Snow crab landed/transhipped in product weight	88 015	
Snow crab landed/transhipped live in kg	146 105	
Factory or reefer	Båtsfjord Sentralfryselager AS	
Landingnote number and date	10431889	22.06.2015

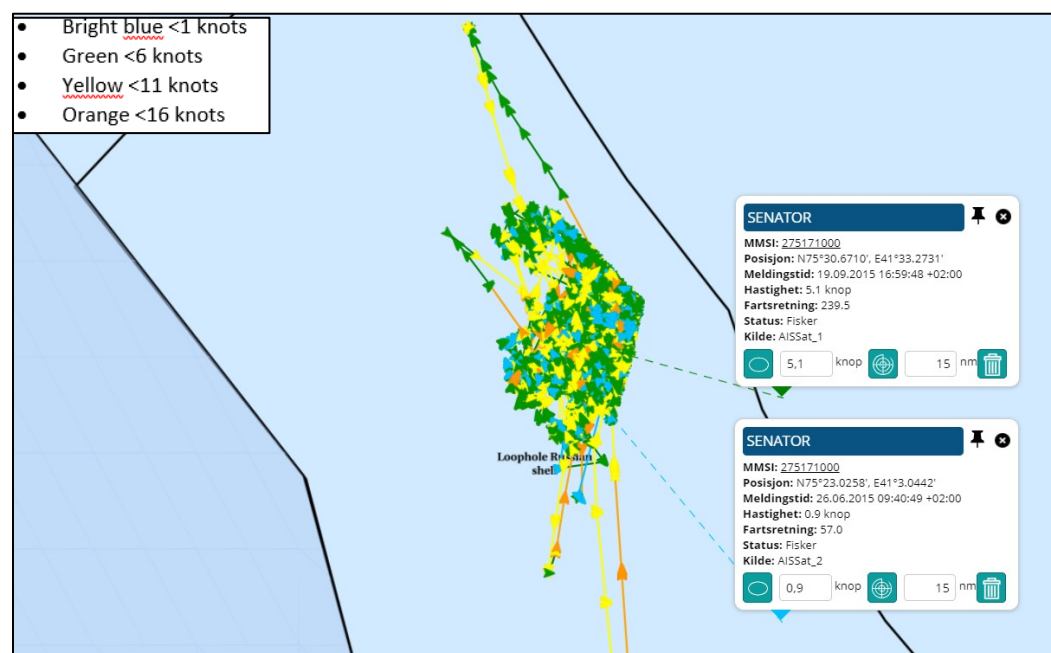
## 2.2 “Senator” voyage 2 from June 24<sup>th</sup> to September 21<sup>st</sup> 2015

Figure 9 “Senator” voyage 2, overview



Voyage 2, overview. “Senator” left Kirkenes port on June 24<sup>th</sup> 2015 and returned to Båtsfjord port on September 21<sup>st</sup> 2015. On arrival, “Senator” landed 56 723 kilos of snow crab in live weight. “Senator” also transshipped 164 610 kilos of snow crab in live weight to the reefer “Nikolay Kasatkin” UEFY while in the Barents Sea (Loop Hole). The track shows that “Senator” sailed past the water column above the Norwegian continental shelf in the Loop Hole on this voyage, northbound and southbound and did not engage in any snow crab harvesting there.

Figure 10 “Senator” voyage 2, < 6 knots on the Russian continental shelf





Russian continental shelf in the Loop Hole. "Senator" was speeding < 6 knots in the period from June 26<sup>th</sup> 2015 time 09:40 until September 19<sup>th</sup> 2015 time 16:59.

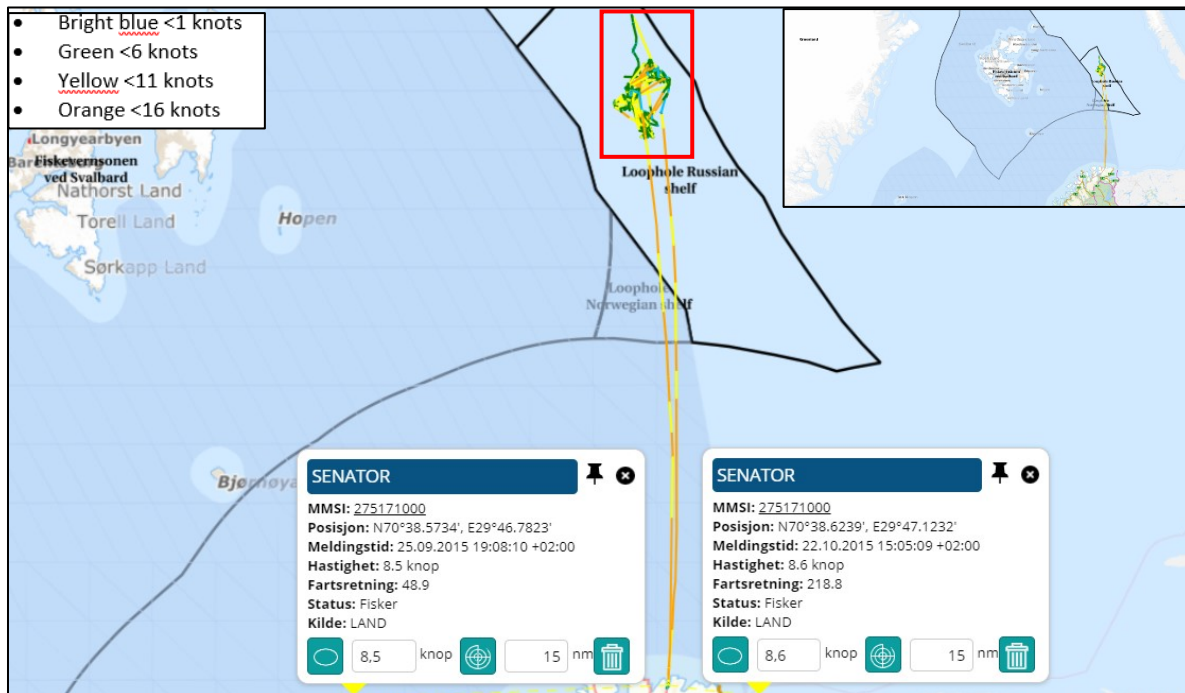
### 2.2.1 "Senator" summary voyage 2

Figure 11 "Senator" summary voyage 2

Voyage started from Kirkenes port	Voyage ended in Båtsfjord port	
24.06.2015	21.09.2015	
Entered Loophole Norwegian Shelf	25.06.2015 20:43	
Left Loophole Norwegian Shelf	25.06.2015 22:32	
Time on Norwegian Shelf (days:hours:minutes)		00:01:49
Period with speed < 6 knots from		
Period with speed < 6 knots to		
Time with speed < 6 knots (days:hours:minutes)		00:00:00
Entered Loophole Russian Shelf	25.06.2015 22:32	
Left Loophole Russian Shelf	20.09.2015 07:38	
Time on Russian Shelf (days:hours:minutes)		85:09:04
Period with speed < 6 knots from	26.06.2015 09:40	
Period with speed < 6 knots to	19.09.2015 16:59	
Time with speed < 6 knots (days:hours:minutes)		84:18:25
Entered Loophole Norwegian Shelf	20.09.2015 07:38	
Left Loophole Norwegian Shelf	20.09.2015 10:49	
Time on Norwegian Shelf (days:hours:minutes)		00:03:10
Period with speed < 6 knots from		
Period with speed < 6 knots to		
Time with speed < 6 knots (days:hours:minutes)		00:00:00
Hours on Norwegian Shelf < 6 knots	0	
Hours on Russian Shelf < 6 knots (Jun 26 - July 29)	2034,25	
Total hours < 6 knots	2034,25	
Percent time on Russian Shelf < 6 knots	100,00 %	
Percent time on Norwegian Shelf < 6 knots	0,00 %	
Snow crab landed/transhipped in product weight	99163	"Nikolay Kasatkin"
Snow crab landed/transhipped live in kg	164 610	
Factory or reefer	Båtsfjord Sentralfryselager AS	
Landingnote number and date	10446111	03.08.2015
Snow crab landed/transhipped in product weight	34171	"Senator"
Snow crab landed/transhipped live in kg	56 723	
Factory or reefer	Båtsfjord Sentralfryselager AS	
Landingnote number and date	10456421	21.09.2015

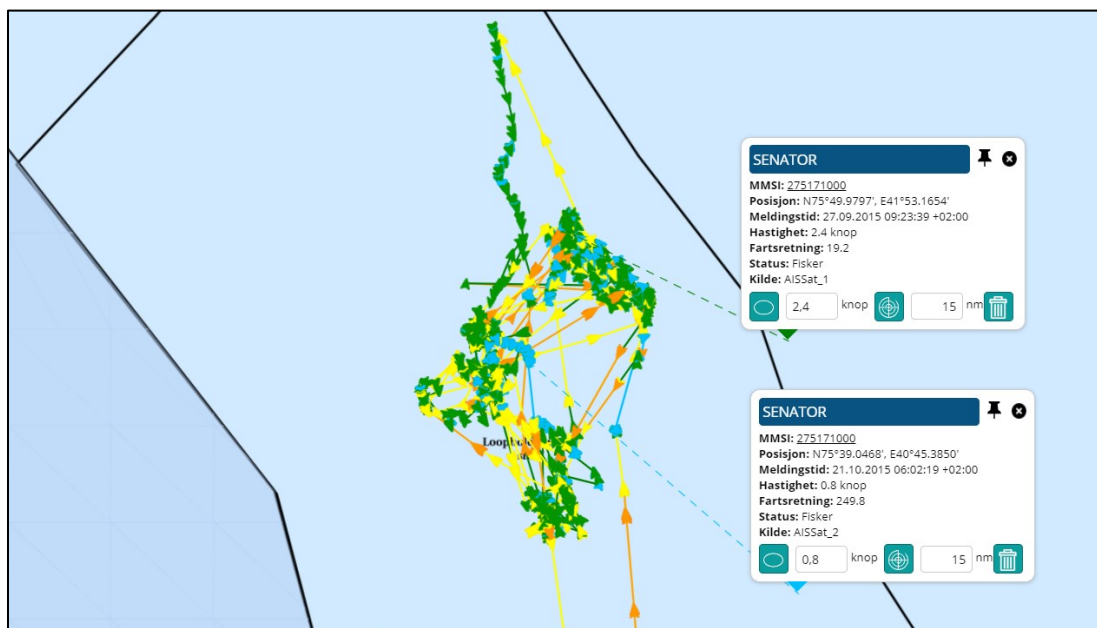
## 2.3 “Senator” voyage 3 from September 25<sup>th</sup> to October 22<sup>nd</sup> 2015

Figure 12 “Senator” voyage 3, overview



Voyage 3, overview. “Senator” left Båtsfjord port on September 25<sup>th</sup> 2015 and returned to Båtsfjord port on October 22<sup>nd</sup> 2015. On arrival, “Senator” landed 92 162 kilos of snow crab in live weight. The track shows that “Senator” sailed past the water column above the Norwegian continental shelf in the Loop Hole on this voyage, northbound and southbound and did not engage in any snow crab harvesting there.

Figure 13 “Senator” voyage 3, < 6 knots on the Russian continental shelf



Russian continental shelf in the Loop Hole. “Senator” was speeding < 6 knots in the period from September 27<sup>th</sup> 2015 time 09:23 until October 21<sup>st</sup> 2015 time 06:02.

## 2.3.1 "Senator" summary voyage 3

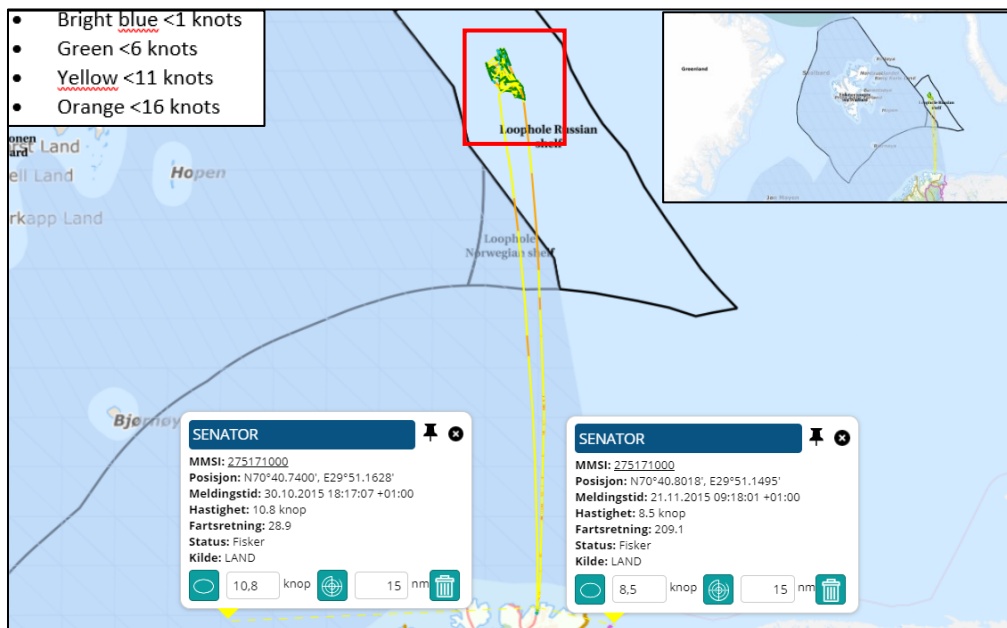
Figure 14 "Senator" summary voyage 3

Voyage started from Båtsfjord port	Voyage ended in Båtsfjord port	
25.09.2015	22.10.2015	
Entered Loophole Norwegian Shelf	26.09.2015 13:58	
Left Loophole Norwegian Shelf	26.09.2015 17:12	
Time on Norwegian Shelf (days:hours:minutes)		00:03:13
Period with speed < 6 knots from		
Period with speed < 6 knots to		
Time with speed < 6 knots (days:hours:minutes)		00:00:00
Entered Loophole Russian Shelf	26.09.2015 17:12	
Left Loophole Russian Shelf	21.10.2015 18:42	
Time on Russian Shelf (days:hours:minutes)		25:01:29
Period with speed < 6 knots from	27.09.2015 09:23	
Period with speed < 6 knots to	21.10.2015 06:02	
Time with speed < 6 knots (days:hours:minutes)		23:20:38
Entered Loophole Norwegian Shelf	21.10.2015 18:42	
Left Loophole Norwegian Shelf	21.10.2015 20:24	
Time on Norwegian Shelf (days:hours:minutes)		00:01:42
Period with speed < 6 knots from		
Period with speed < 6 knots to		
Time with speed < 6 knots (days:hours:minutes)		00:00:00
Hours on Norwegian Shelf < 6 knots	0	
Hours on Russian Shelf < 6 knots	572,38	
Total hours < 6 knots	572,38	
Percent time on Russian Shelf < 6 knots	100,00 %	
Percent time on Norwegian Shelf < 6 knots	0,00 %	
Snow crab landed/transhipped in product weight	55 519	
Snow crab landed/transhipped live in kg	92 162	
Factory or reefer	Båtsfjord Sentralfryselager AS	
Landingnote number and date	10466135	22.10.2015



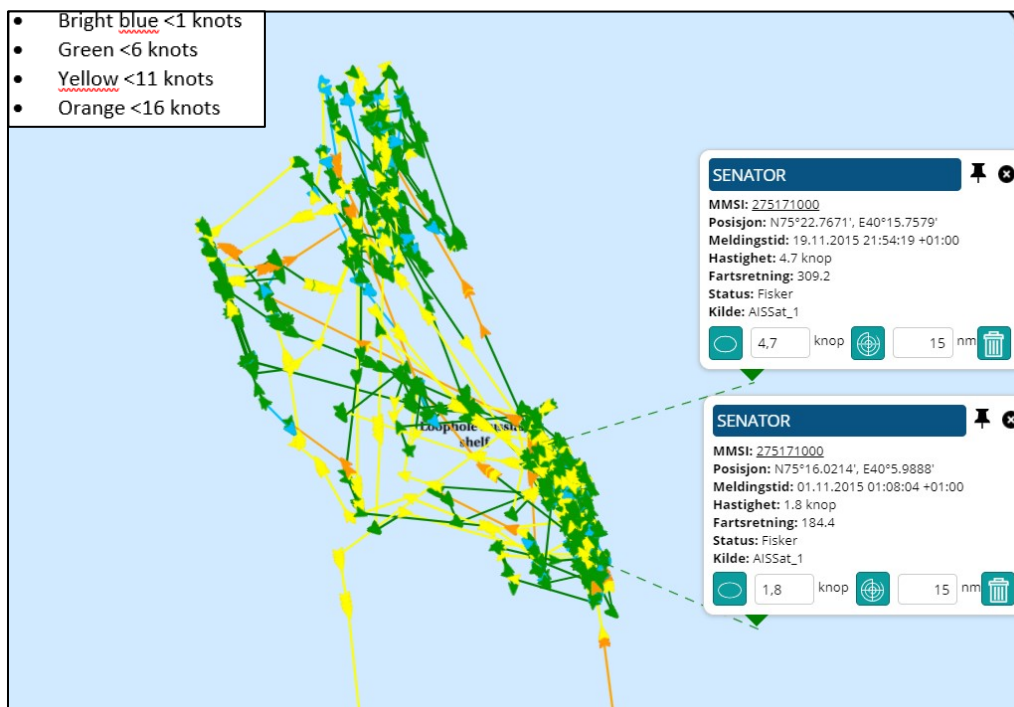
## 2.4 “Senator” voyage 4 from October 30<sup>th</sup> to November 21<sup>st</sup> 2015

Figure 15 “Senator” voyage 4, overview



Voyage 4, overview. “Senator” left Båtsfjord port on October 30<sup>th</sup> 2015 and returned to Båtsfjord port on November 21<sup>st</sup> 2015. On arrival, “Senator” landed 109 110 kilos of snow crab in live weight. The track shows that “Senator” sailed past the water column above the Norwegian continental shelf in the Loop Hole on this voyage, northbound and southbound and did not engage in any snow crab harvesting there.

Figure 16 “Senator” voyage 4, < 6 knots on the Russian continental shelf



Russian continental shelf in the Loop Hole. "Senator" was speeding < 6 knots in the period from November 1<sup>st</sup> 2015 time 01:08 until November 19<sup>th</sup> 2015 time 21:54.

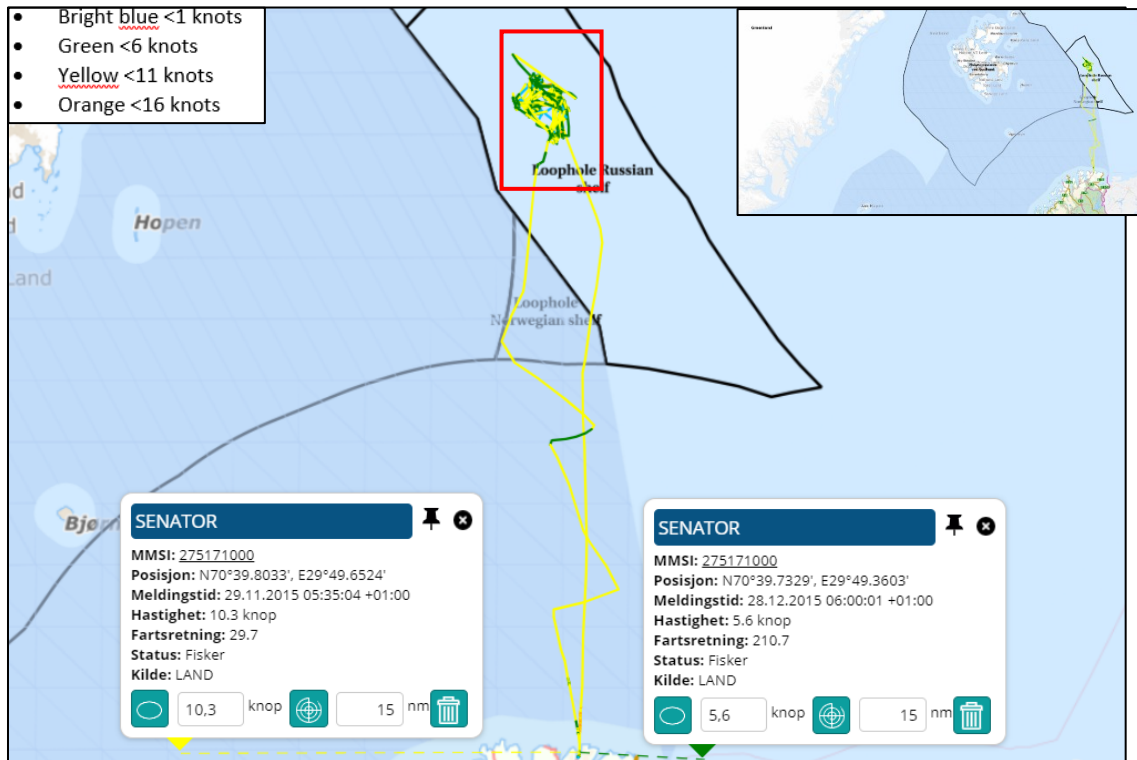
#### 2.4.1 "Senator" summary voyage 4

Figure 17 "Senator" summary voyage 4

Voyage started from Båtsfjord port	Voyage ended in Båtsfjord port	
30.10.2015	21.11.2015	
Entered Loophole Norwegian Shelf	31.10.2015 13:47	
Left Loophole Norwegian Shelf	31.10.2015 17:08	
Time on Norwegian Shelf (days:hours:minutes)		00:03:21
Period with speed < 6 knots from		
Period with speed < 6 knots to		
Time with speed < 6 knots (days:hours:minutes)		00:00:00
Entered Loophole Russian Shelf	31.10.2015 17:08	
Left Loophole Russian Shelf	20.11.2015 09:11	
Time on Russian Shelf (days:hours:minutes)		19:16:02
Period with speed < 6 knots from	01.11.2015 01:08	
Period with speed < 6 knots to	19.11.2015 21:54	
Time with speed < 6 knots (days:hours:minutes)		18:20:46
Entered Loophole Norwegian Shelf	20.11.2015 09:11	
Left Loophole Norwegian Shelf	20.11.2015 14:00	
Time on Norwegian Shelf (days:hours:minutes)		00:04:49
Period with speed < 6 knots from		
Period with speed < 6 knots to		
Time with speed < 6 knots (days:hours:minutes)		00:00:00
Hours on Norwegian Shelf < 6 knots	0	
Hours on Russian Shelf < 6 knots	452,46	
Total hours < 6 knots	452,46	
Percent time on Russian Shelf < 6 knots	100,00 %	
Percent time on Norwegian Shelf < 6 knots	0,00 %	
Snow crab landed/transhipped in product weight	65 729	
Snow crab landed/transhipped live in kg	109 110	
Factory or reefer	Båtsfjord Sentralfryselager AS	
Landingnote number and date	10476239	23.11.2015

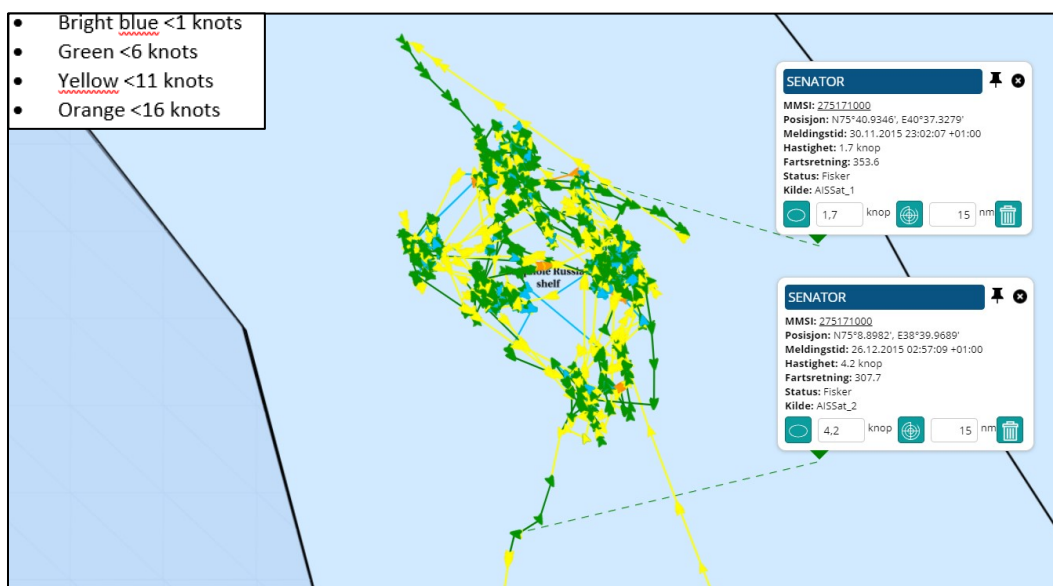
## 2.5 “Senator” voyage 5 from November 29<sup>th</sup> to December 28<sup>th</sup> 2015

Figure 18 “Senator” voyage 5, overview



Voyage 5, overview. “Senator” left Båtsfjord port on November 29<sup>th</sup> 2015 and returned to Båtsfjord port on December 28<sup>th</sup> 2015. On arrival, “Senator” landed 152 496 kilos of snow crab in live weight. The track shows that “Senator” sailed past the water column above the Norwegian continental shelf in the Loop Hole on this voyage, northbound and southbound and did not engage in any snow crab harvesting there.

Figure 19 “Senator” voyage 5, < 6 knots on the Russian continental shelf



Russian continental shelf in the Loop Hole. "Senator" was speeding < 6 knots in the period from November 30<sup>th</sup> 2015 time 23:02 until December 26<sup>th</sup> 2015 time 02:57.

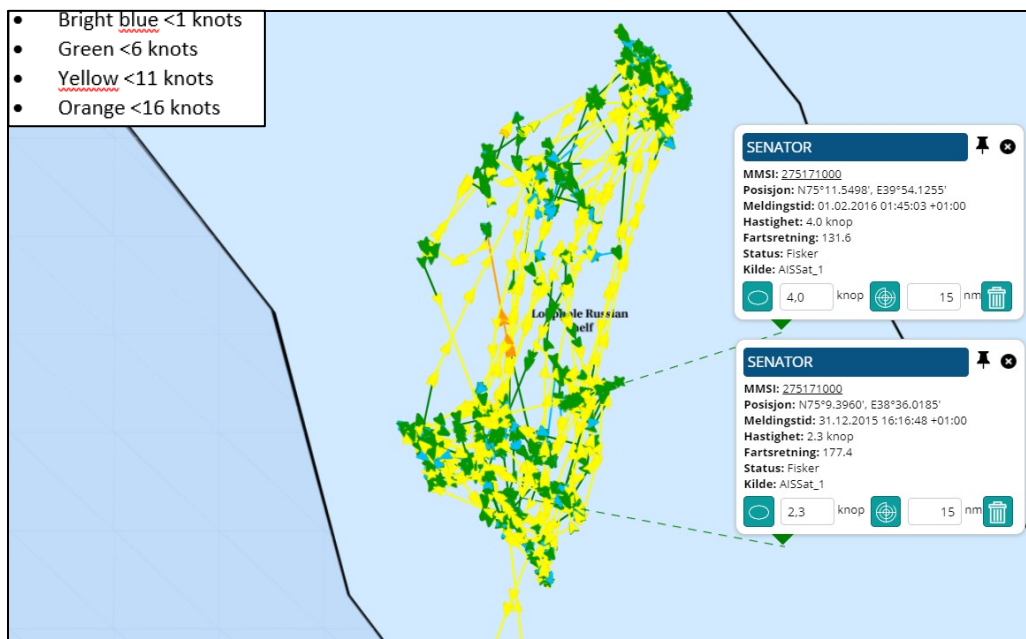
### 2.5.1 "Senator" summary voyage 5

Figure 20 "Senator" summary voyage 5

Voyage started from Båtsfjord port	Voyage ended in Båtsfjord port	
29.11.2015	28.12.2015	
Entered Loophole Norwegian Shelf	30.11.2015 02:00	
Left Loophole Norwegian Shelf	30.11.2015 04:32	
Time on Norwegian Shelf (days:hours:minutes)		00:02:31
Period with speed < 6 knots from		
Period with speed < 6 knots to		
Time with speed < 6 knots (days:hours:minutes)		00:00:00
Entered Loophole Russian Shelf	30.11.2015 04:32	
Left Loophole Russian Shelf	26.12.2015 07:03	
Time on Russian Shelf (days:hours:minutes)		26:02:31
Period with speed < 6 knots from	30.11.2015 23:02	
Period with speed < 6 knots to	26.12.2015 02:57	
Time with speed < 6 knots (days:hours:minutes)		25:03:55
Entered Loophole Norwegian Shelf	26.12.2015 07:03	
Left Loophole Norwegian Shelf	26.12.2015 15:00	
Time on Norwegian Shelf (days:hours:minutes)		00:07:56
Period with speed < 6 knots from		
Period with speed < 6 knots to		
Time with speed < 6 knots (days:hours:minutes)		00:00:00
Hours on Norwegian Shelf < 6 knots	0	
Hours on Russian Shelf < 6 knots	603,55	
Total hours < 6 knots	603,55	
Percent time on Russian Shelf < 6 knots	100,00 %	
Percent time on Norwegian Shelf < 6 knots	0,00 %	
Snow crab landed/transhipped in product weight	91 865	
Snow crab landed/transhipped live in kg	152 496	
Factory or reefer	Båtsfjord Sentralfryselager AS	
Landingnote number and date	10482430	28.12.2015

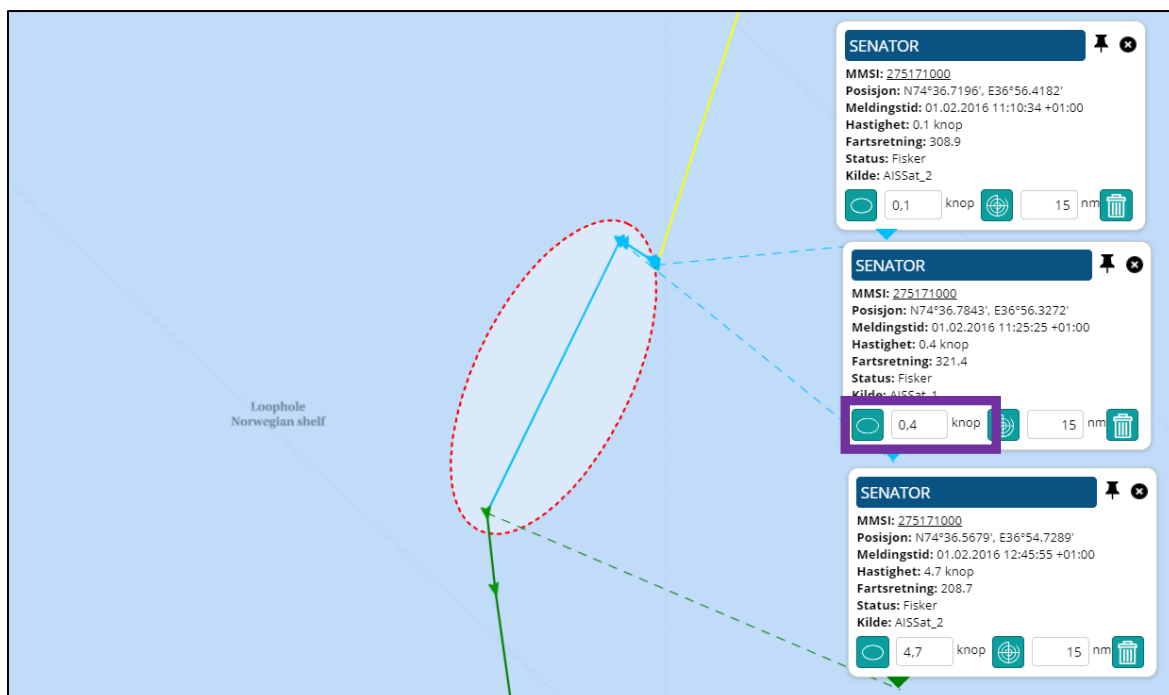


Figure 22 "Senator" voyage 6, < 6 knots on the Russian continental shelf



Russian continental shelf in the Loop Hole. "Senator" was speeding < 6 knots in the period from December 31<sup>th</sup> 2015 time 16:16 until February 1<sup>st</sup> 2016 time 01:45.

Figure 23 "Senator" voyage 6 < 6 knots on the Norwegian continental shelf



Norwegian continental shelf in the Loop Hole. Heading southbound, "Senator" was sailing with speed <1 knots in the period from time 11:10 until time 12:45 on February 1<sup>st</sup> 2016.

The red dotted ellipse shows the theoretical area where "Senator" might have moved in the period from 11:10 and 12:45 on February 1<sup>st</sup> 2016. The purple rectangular box in the pop up in the picture above shows the average speed "Senator" must have had in between the AIS-position with the registered speed of 0, 4 knots and the next AIS-position with the registered speed of 4,7 knots.



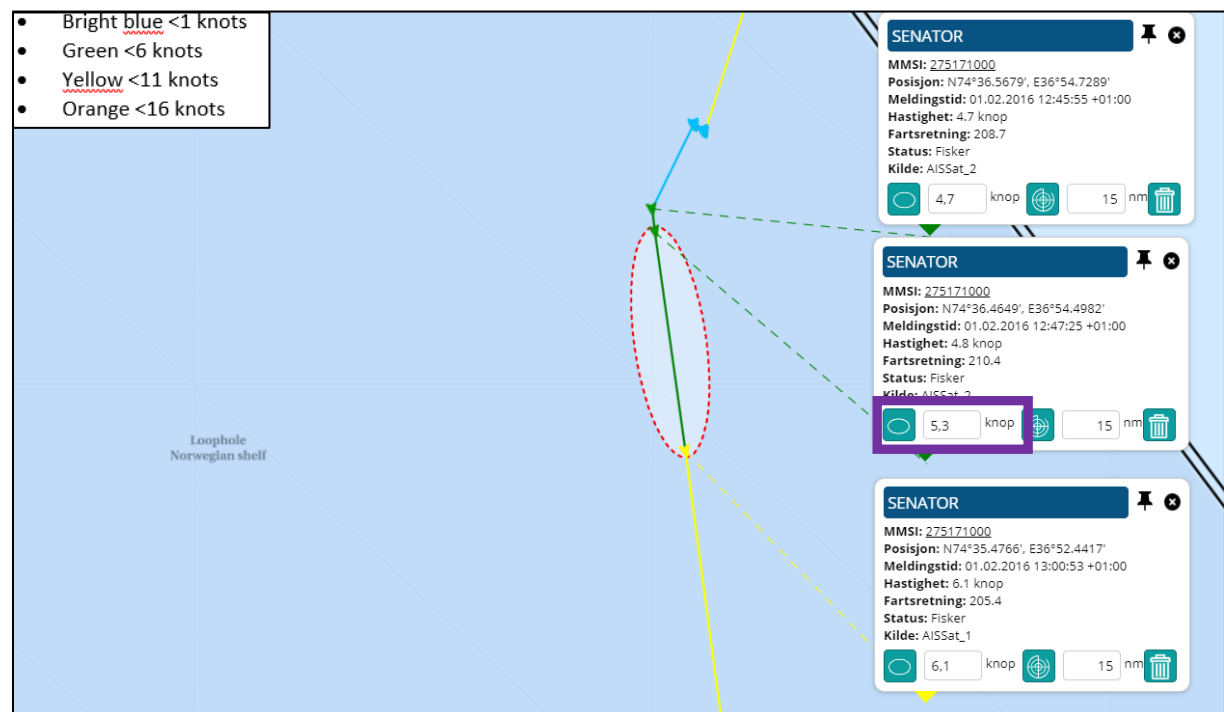
The distance and time between the AIS-positions shows that “Senator” was unlikely to have been involved in any snow crab harvesting during this period.

Figure 24 “Senator” voyage 6, < 1 knots AIS-positions on the Norwegian continental shelf

Ship	MMSI	IMO	Callsign	Messagetime	Lon	Lat	Speed	Heading	Source
SENATOR	275171000	6812986	YLAC	01.02.2016 09:49	37,218902	74,66382	8,00	233,1	AISSat_1
SENATOR	275171000	6812986	YLAC	01.02.2016 11:10	36,940303	74,611993	0,10	308,8	AISSat_2
SENATOR	275171000	6812986	YLAC	01.02.2016 11:11	36,940177	74,612052	0,20	359,8	AISSat_2
SENATOR	275171000	6812986	YLAC	01.02.2016 11:12	36,94019	74,612145	0,60	340,6	AISSat_2
SENATOR	275171000	6812986	YLAC	01.02.2016 11:23	36,939083	74,612952	0,30	313,2	AISSat_1
SENATOR	275171000	6812986	YLAC	01.02.2016 11:25	36,938787	74,613072	0,40	321,3	AISSat_1

The table above shows the time, position and speed for “Senator” ‘s AIS-positions before and after the reduction in speed.

Figure 25 “Senator” voyage 6, < 6 knots on the Norwegian continental shelf



Norwegian continental shelf in the Loop Hole. Heading southbound, “Senator” was sailing with speed <6 knots in the period from time 12:45 until time 13:00 on February 1<sup>st</sup> 2016.

The red dotted ellipse shows the theoretical area where “Senator” possible can have moved in the period from time 12:45 and time 13:00 on February 1<sup>st</sup> 2016. The purple rectangular box in the pop up in the picture above shows the average speed “Senator” must have had in between the AIS-position with the registered speed of 5,3 knots and the next AIS-position with the registered speed of 6,1 knots.

The distance and time between the AIS-positions shows that “Senator” unlikely have been involved in any snow crab harvesting during this period.

Figure 26 "Senator" voyage 6, &lt; 6 knots AIS-positions on the Norwegian continental shelf

Ship	MMSI	IMO	Callsign	Messagetime	Lon	Lat	Speed	Heading	Source
SENATOR	275171000	6812986	YLAC	01.02.2016 12:45	36,912148	74,609465	4,70	208,6	AISSat_2
SENATOR	275171000	6812986	YLAC	01.02.2016 12:47	36,908303	74,607748	4,80	210,3	AISSat_2
SENATOR	275171000	6812986	YLAC	01.02.2016 13:00	36,874028	74,591277	6,10	205,3	AISSat_1

The table above shows the time, position and speed for "Senator" 's AIS-positions after the reduction in speed.

### 2.6.1 "Senator" summary voyage 6

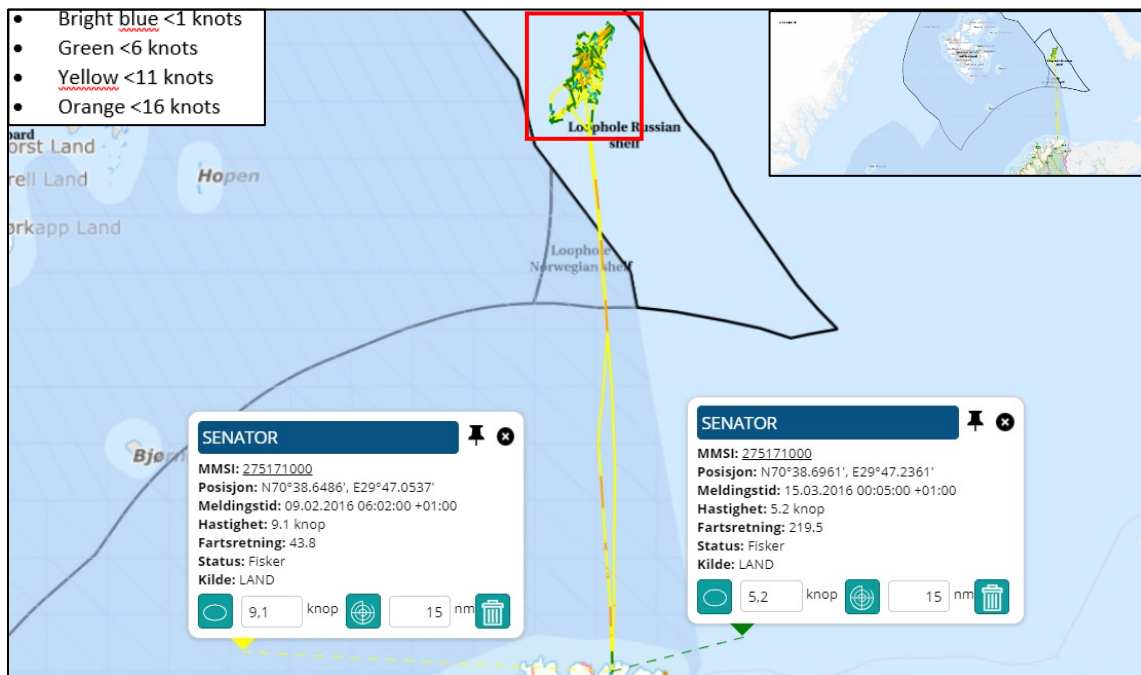
Figure 27 "Senator" summary voyage 6

Voyage started from Båtsfjord port	Voyage ended in Båtsfjord port	
30.12.2015	03.02.2016	
Entered Loophole Norwegian Shelf	31.12.2015 06:05	
Left Loophole Norwegian Shelf	31.12.2015 12:32	
Time on Norwegian Shelf (days:hours:minutes)		00:06:27
Period with speed < 6 knots from		
Period with speed < 6 knots to		
Time with speed < 6 knots (days:hours:minutes)		00:00:00
Entered Loophole Russian Shelf	31.12.2015 12:32	
Left Loophole Russian Shelf	01.02.2016 11:10	
Time on Russian Shelf (days:hours:minutes)		31:22:37
Period with speed < 6 knots from	31.12.2015 16:16	
Period with speed < 6 knots to	01.02.2016 01:45	
Time with speed < 6.knots (days:hours:minutes)		31:09:28
Entered Loophole Norwegian Shelf	01.02.2016 11:10	
Left Loophole Norwegian Shelf	01.02.2016 22:34	
Time on Norwegian Shelf (days:hours:minutes)		00:11:23
Period with speed < 6 knots from		
Period with speed < 6 knots to		
Time with speed < 6 knots (days:hours:minutes)		00:00:00
Hours on Norwegian Shelf < 6 knots	0	
Hours on Russian Shelf < 6 knots	753,28	
Total hours < 6 knots	753,28	
Percent time on Russian Shelf < 6 knots	100,00 %	
Percent time on Norwegian Shelf < 6 knots	0,00 %	
Snow crab landed/transhipped in product weight	117 982	
Snow crab landed/transhipped live in kg	195 850	
Factory or reefer	Båtsfjord Sentralfryselager AS	
Landingnote number and date	10499763	03.02.2016



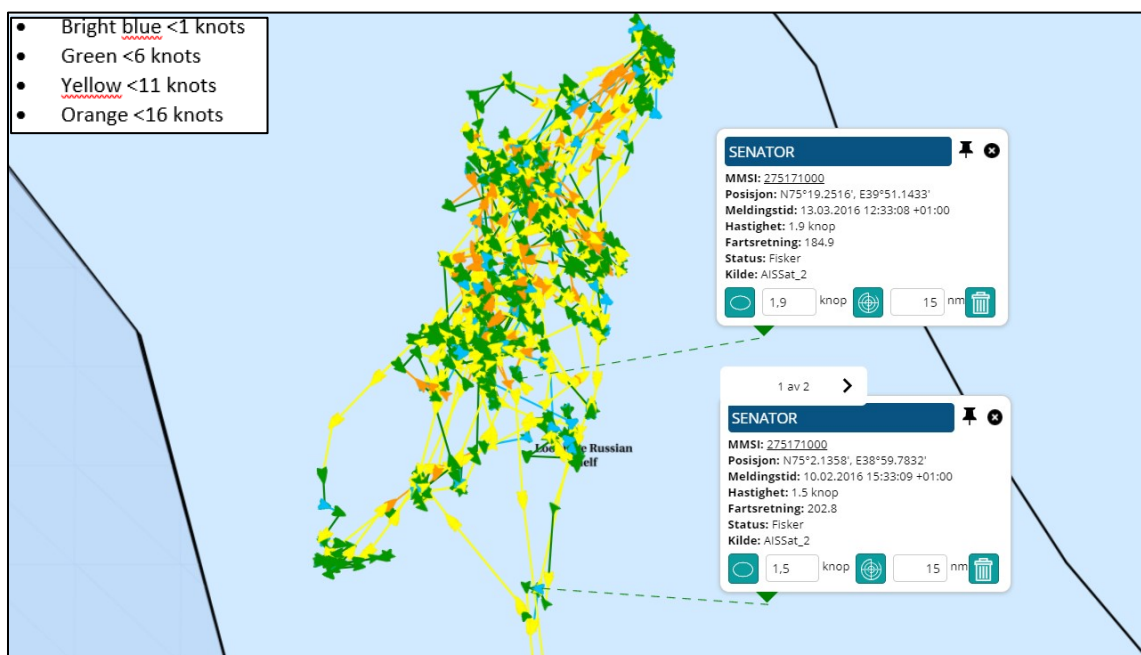
## 2.7 “Senator” voyage 7 from February 9<sup>th</sup> 2015 to March 15<sup>th</sup> 2016

Figure 28 “Senator” voyage 7, overview



Voyage 7, overview. “Senator” left Båtsfjord port on February 9<sup>th</sup> 2016 and returned to Båtsfjord port on March 15<sup>th</sup> 2016. On arrival, “Senator” landed 174 142 kilos of snow crab in live weight. The track shows that “Senator” sailed past the water column above the Norwegian continental shelf in the Loop Hole on this voyage, northbound and southbound and did not engage in any snow crab harvesting there.

Figure 29 “Senator” voyage 7, < 6 knots on the Russian continental shelf



Russian continental shelf in the Loop Hole. "Senator" was speeding < 6 knots in the period from February 10<sup>th</sup> 2016 time 15:33 until March 13<sup>th</sup> 2016 time 12:33.

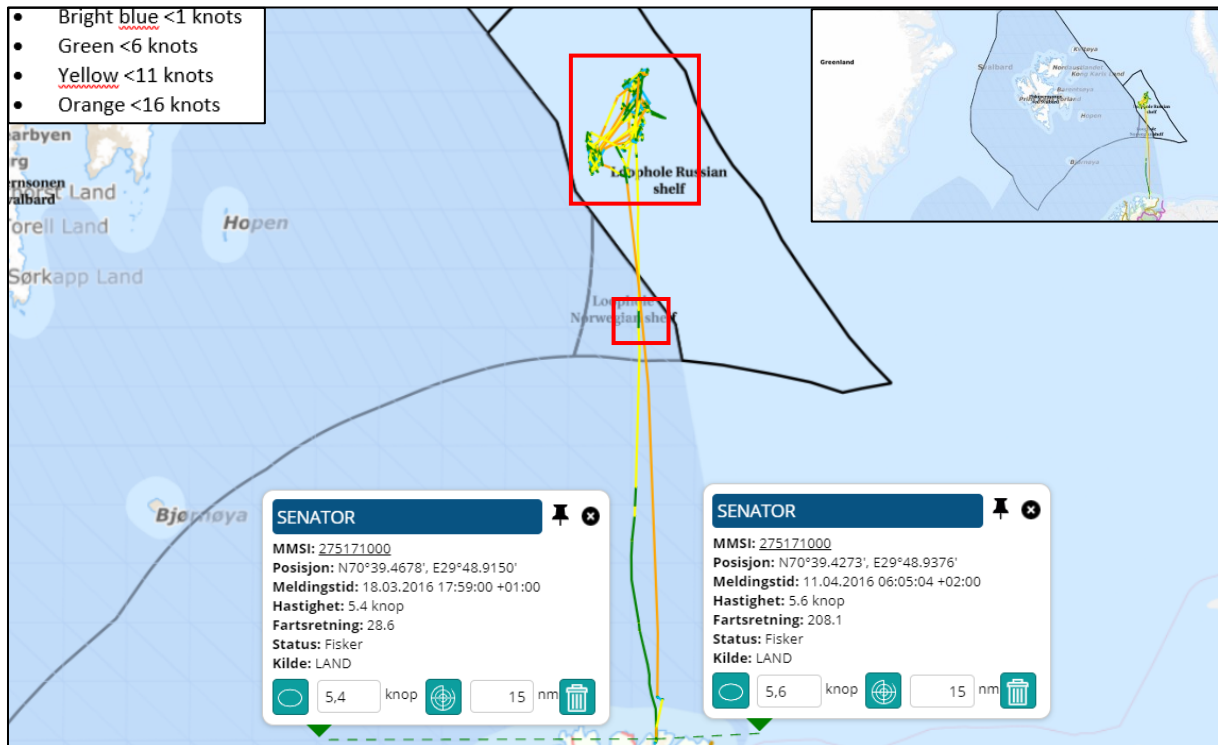
### 2.7.1 "Senator" summary voyage 7

Figure 30 "Senator" summary voyage 7

Voyage started from Båtsfjord port	Voyage ended in Båtsfjord port	
09.02.2016	15.03.2016	
Entered Loophole Norwegian Shelf	10.02.2016 02:36	
Left Loophole Norwegian Shelf	10.02.2016 07:29	
Time on Norwegian Shelf (days:hours:minutes)		00:04:53
Period with speed < 6 knots from		
Period with speed < 6 knots to		
Time with speed < 6 knots (days:hours:minutes)		00:00:00
Entered Loophole Russian Shelf	10.02.2016 07:29	
Left Loophole Russian Shelf	13.03.2016 22:18	
Time on Russian Shelf (days:hours:minutes)		32:14:47
Period with speed < 6 knots from	10.02.2016 15:33	
Period with speed < 6 knots to	13.03.2016 12:33	
Time with speed < 6 knots (days:hours:minutes)		31:20:59
Entered Loophole Norwegian Shelf	13.03.2016 22:18	
Left Loophole Norwegian Shelf	14.03.2016 02:30	
Time on Norwegian Shelf (days:hours:minutes)		00:04:11
Period with speed < 6 knots from		
Period with speed < 6 knots to		
Time with speed < 6 knots (days:hours:minutes)		00:00:00
Hours on Norwegian Shelf < 6 knots	0	
Hours on Russian Shelf < 6 knots	764,59	
Total hours < 6 knots	764,59	
Percent time on Russian Shelf < 6 knots	100,00 %	
Percent time on Norwegian Shelf < 6 knots	0,00 %	
Snow crab landed/transhipped in product weight	104 905	
Snow crab landed/transhipped live in kg	174 142	
Factory or reefer	Båtsfjord Sentralfryselager AS	
Landingnote number and date	10534940	15.03.2016

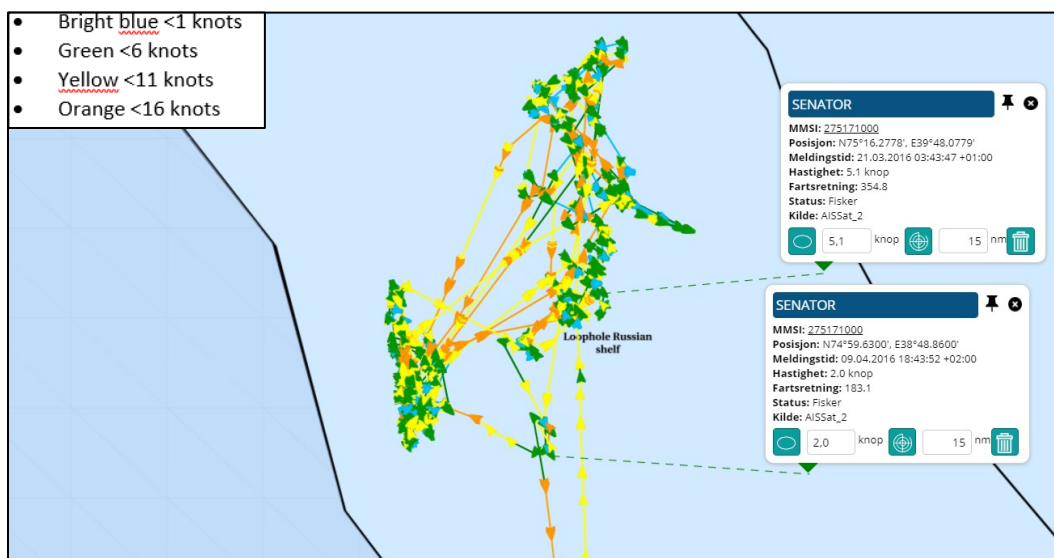
## 2.8 “Senator” voyage 8 from March 18<sup>th</sup> to April 11<sup>th</sup> 2016

Figure 31 “Senator” voyage 8, overview



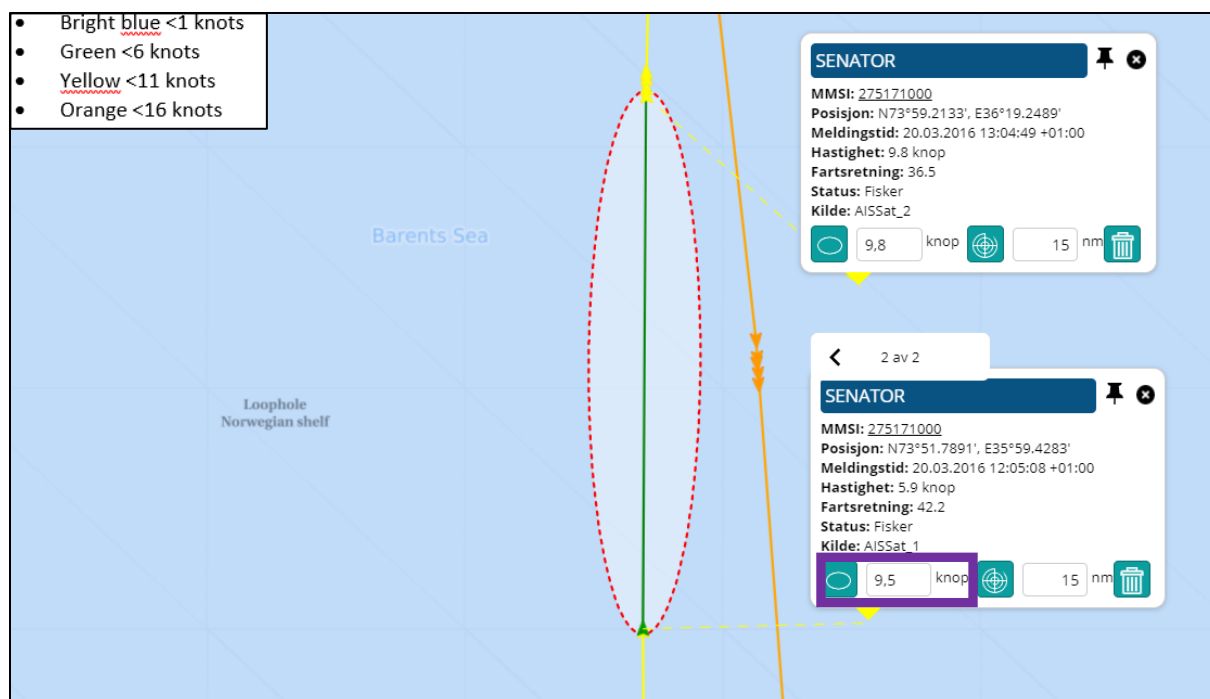
Voyage 8, overview. “Senator” left Båtsfjord port on March 18<sup>th</sup> 2016 and returned to Båtsfjord port on April 11<sup>th</sup> 2016. On arrival, “Senator” landed 122 284 kilos of snow crab in live weight. The track shows that “Senator” sailed past the water column above the Norwegian continental shelf in the Loop Hole on this voyage, northbound and southbound. The green color of the track indicates that “Senator” was sailing with speed <6 knots in given periods on the Norwegian continental shelf.

Figure 32 “Senator” voyage 8, < 6 knots on the Russian continental shelf



Russian continental shelf in the Loop Hole. “Senator” was speeding < 6 knots in the period from March 21<sup>th</sup> 2016 time 03:43 until April 9<sup>th</sup> 2016 time 18:43.

Figure 33 "Senator" voyage 8, &lt; 6 knots on the Norwegian continental shelf



Norwegian continental shelf in the Loop Hole. "Senator" had one single AIS-position with speed < 6 knots on the Norwegian continental shelf in the Loop Hole. This position is dated March 20<sup>th</sup> 2016 time 12:05 and shows speed of 5,9 knots. The next AIS-position was registered March 20<sup>th</sup> at time 13:04 and shows speed of 9,8 knots.

The distance between these two AIS-positions shows that "Senator" must have had an average speed of 9,5 knots between these two positions. The average speed of 9,5 knots is shown in the purple rectangular box in the pop up in the picture above. The red dotted ellipse, also included in the picture above, shows the theoretical area where "Senator" possibly can have moved in between time 12:05 and time 13:04 on March 20<sup>th</sup>.

The distance and time between the AIS-positions shows that "Senator" is unlikely to have been involved in any snow crab harvesting during this period.

Figure 34 "Senator" voyage 8, &lt; 6 knots AIS-positions on the Norwegian continental shelf

Ship	MMSI	IMO	Callsign	Message time	Lon	Lat	Speed	Heading	Source
SENATOR	275171000	6812986	YLAC	20.03.2016 12:05	35,990472	73,863152	5,90	42,2	AISSat_1
SENATOR	275171000	6812986	YLAC	20.03.2016 13:04	36,320815	73,986888	9,80	36,5	AISSat_2

The table above shows the time, position and speed for "Senator"'s AIS-positions on the Norwegian continental shelf of the Loop hole when reducing speed to <6 knots. The next AIS-position included in the table is the next AIS-position after the AIS-position with speed <6 knots in time.

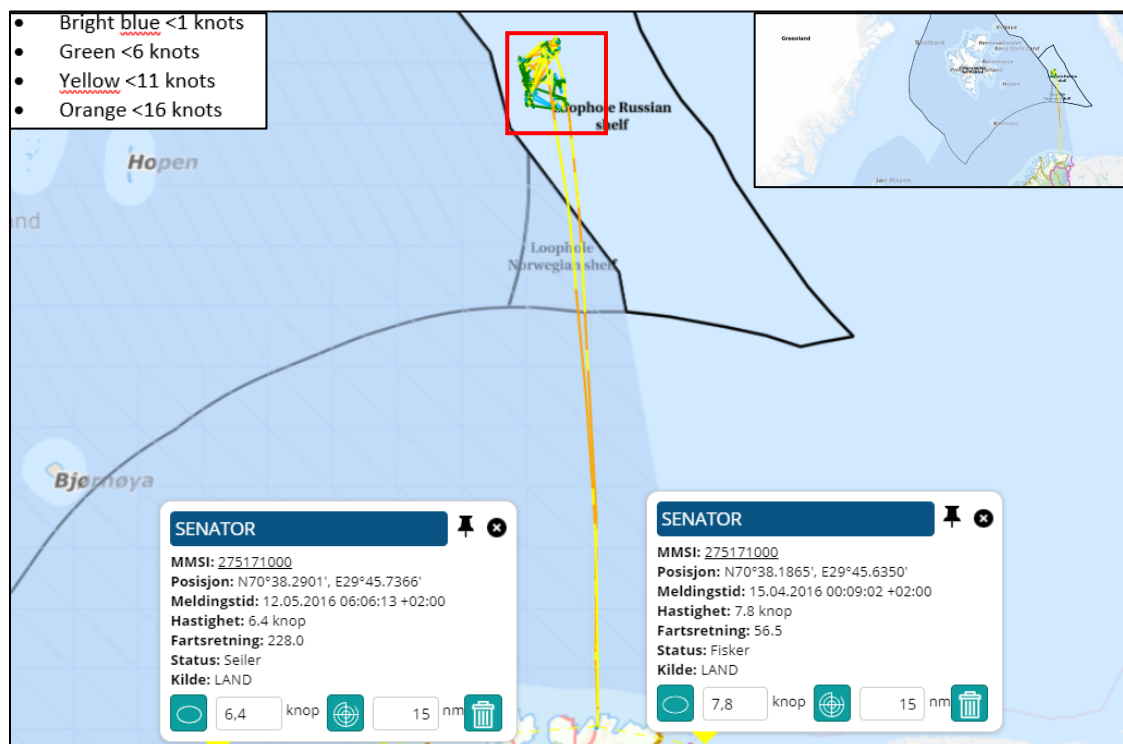
## 2.8.1 "Senator" summary voyage 8

Figure 35 "Senator" summary voyage 8

Voyage started from Båtsfjord port	Voyage ended in Båtsfjord port	
18.03.2016	11.04.2016	
Entered Loophole Norwegian Shelf	20.03.2016 09:53	
Left Loophole Norwegian Shelf	20.03.2016 15:16	
Time on Norwegian Shelf (days:hours:minutes)		00:05:23
Period with speed < 6 knots from		
Period with speed < 6 knots to		
Time with speed < 6 knots (days:hours:minutes)		00:00:00
Entered Loophole Russian Shelf	20.03.2016 15:16	
Left Loophole Russian Shelf	10.04.2016 02:09	
Time on Russian Shelf (days:hours:minutes)		20:10:52
Period with speed < 6 knots from	21.03.2016 03:43	
Period with speed < 6 knots to	09.04.2016 18:43	
Time with speed < 6 knots (days:hours:minutes)		19:15:00
Entered Loophole Norwegian Shelf	10.04.2016 02:09	
Left Loophole Norwegian Shelf	10.04.2016 06:01	
Time on Norwegian Shelf (days:hours:minutes)		00:03:52
Period with speed < 6 knots from		
Period with speed < 6 knots to		
Time with speed < 6 knots (days:hours:minutes)		00:00:00
Hours on Norwegian Shelf < 6 knots	0	
Hours on Russian Shelf < 6 knots	471	
Total hours < 6 knots	471	
Percent time on Russian Shelf < 6 knots	100,00 %	
Percent time on Norwegian Shelf < 6 knots	0,00 %	
Snow crab landed/transhipped in product weight	73 665	
Snow crab landed/transhipped live in kg	122 284	
Factory or reefer	Båtsfjord Sentralfryselager AS	
Landingnote number and date	10557856	11.04.2016

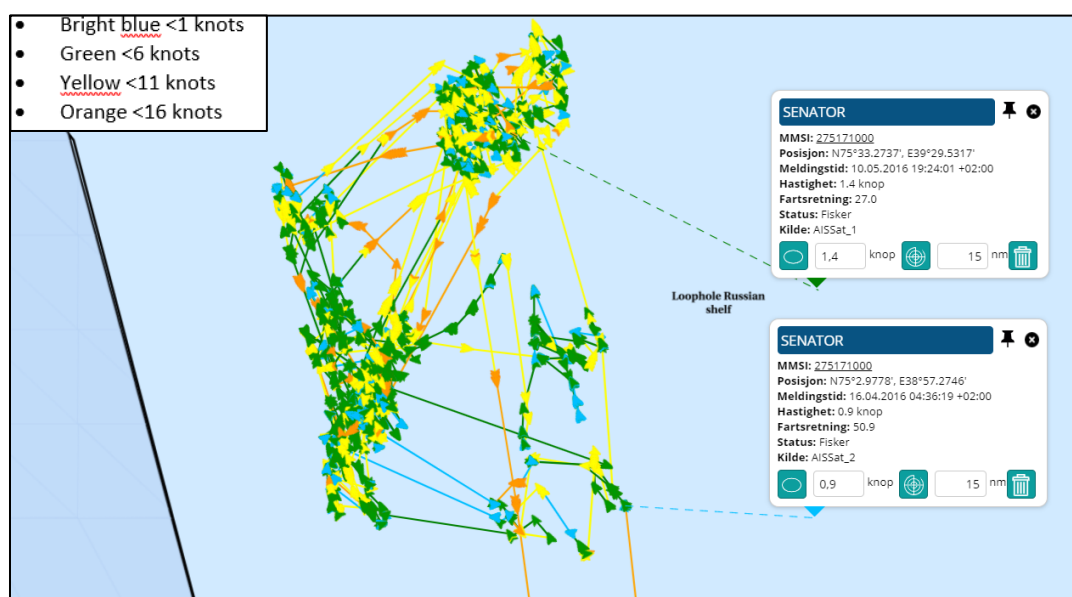
## 2.9 “Senator” voyage 9 from April 15<sup>th</sup> to May 12<sup>th</sup> 2016

Figure 36 “Senator” voyage 9, overview



Voyage 9, overview. “Senator” left Båtsfjord port on April 15<sup>th</sup> 2016 and returned to Båtsfjord port on May 12<sup>th</sup> 2016. On arrival, “Senator” landed 190 360 kilos of snow crab in live weight. The track shows that “Senator” sailed past the water column above the Norwegian continental shelf in the Loop Hole on this voyage, northbound and southbound, and did not engage in any snow crab harvesting there.

Figure 37 “Senator” voyage 9, < 6 knots on the Russian continental shelf





Russian continental shelf in the Loop Hole. "Senator" was speeding < 6 knots in the period from April 16<sup>th</sup> 2016 time 04:36 until May 10<sup>th</sup> 2016 time 19:24.

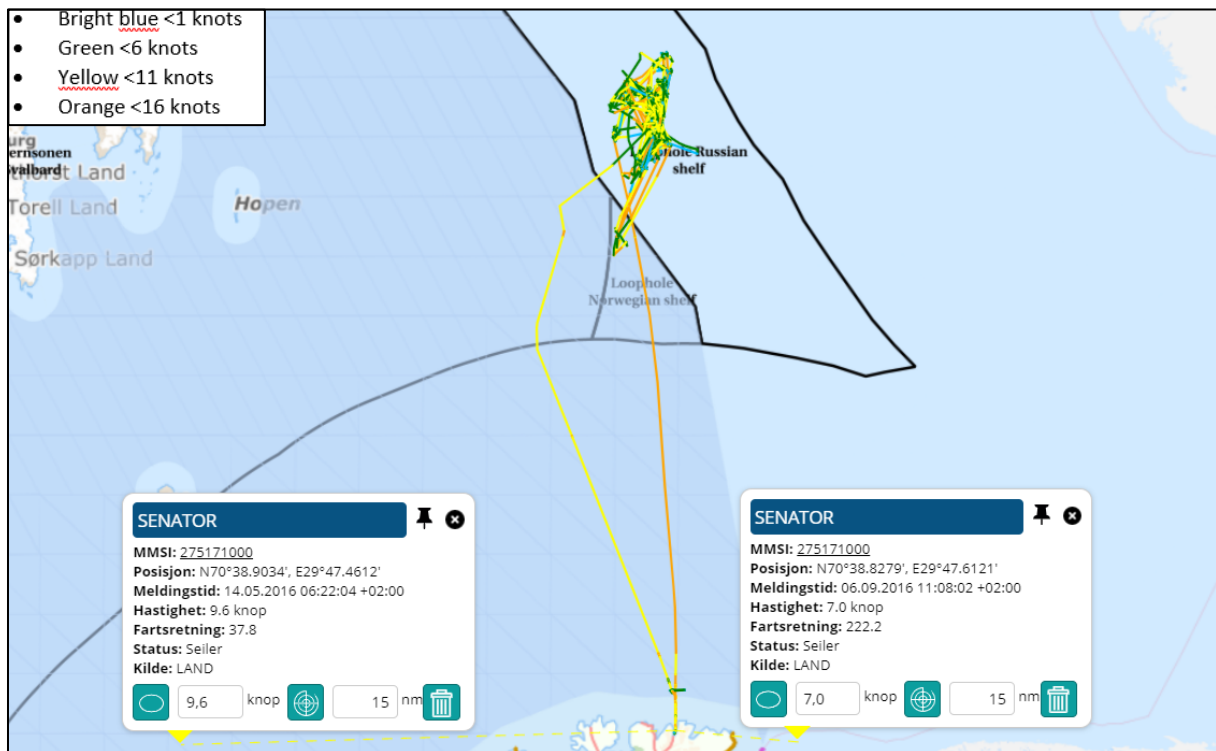
### 2.9.1 "Senator" summary voyage 9

Figure 38 "Senator" summary voyage 9

Voyage started from Båtsfjord port	Voyage ended in Båtsfjord port	
15.04.2016	12.05.2016	
Entered Loophole Norwegian Shelf	15.04.2016 18:59	
Left Loophole Norwegian Shelf	15.04.2016 23:46	
Time on Norwegian Shelf (days:hours:minutes)		00:04:47
Period with speed < 6 knots from		
Period with speed < 6 knots to		
Time with speed < 6 knots (days:hours:minutes)		00:00:00
Entered Loophole Russian Shelf	15.04.2016 23:46	
Left Loophole Russian Shelf	11.05.2016 05:52	
Time on Russian Shelf (days:hours:minutes)		25:06:05
Period with speed < 6 knots from	16.04.2016 04:36	
Period with speed < 6 knots to	10.05.2016 19:24	
Time with speed < 6 knots (days:hours:minutes)		24:14:47
Entered Loophole Norwegian Shelf	11.05.2016 05:52	
Left Loophole Norwegian Shelf	11.05.2016 11:28	
Time on Norwegian Shelf (days:hours:minutes)		00:05:36
Period with speed < 6 knots from		
Period with speed < 6 knots to		
Time with speed < 6 knots (days:hours:minutes)		00:00:00
Hours on Norwegian Shelf < 6 knots	0	
Hours on Russian Shelf < 6 knots	590,47	
Total hours < 6 knots	590,47	
Percent time on Russian Shelf < 6 knots	100,00 %	
Percent time on Norwegian Shelf < 6 knots	0,00 %	
Snow crab landed/transhipped in product weight	118 236	
Snow crab landed/transhipped live in kg	190 360	
Factory or reefer	Båtsfjord Sentralfryselager AS	
Landingnote number and date	10571817	12.05.2016

## 2.10 “Senator” voyage 10 from May 14<sup>th</sup> to September 6<sup>th</sup> 2016

Figure 39 “Senator” voyage 10, overview



Voyage 10, overview. “Senator” left Båtsfjord port on May 14<sup>th</sup> 2016 and returned to Båtsfjord port on September 6<sup>th</sup> 2016. On arrival, “Senator” landed 118 556 kilos of snow crab calculated in live weight.

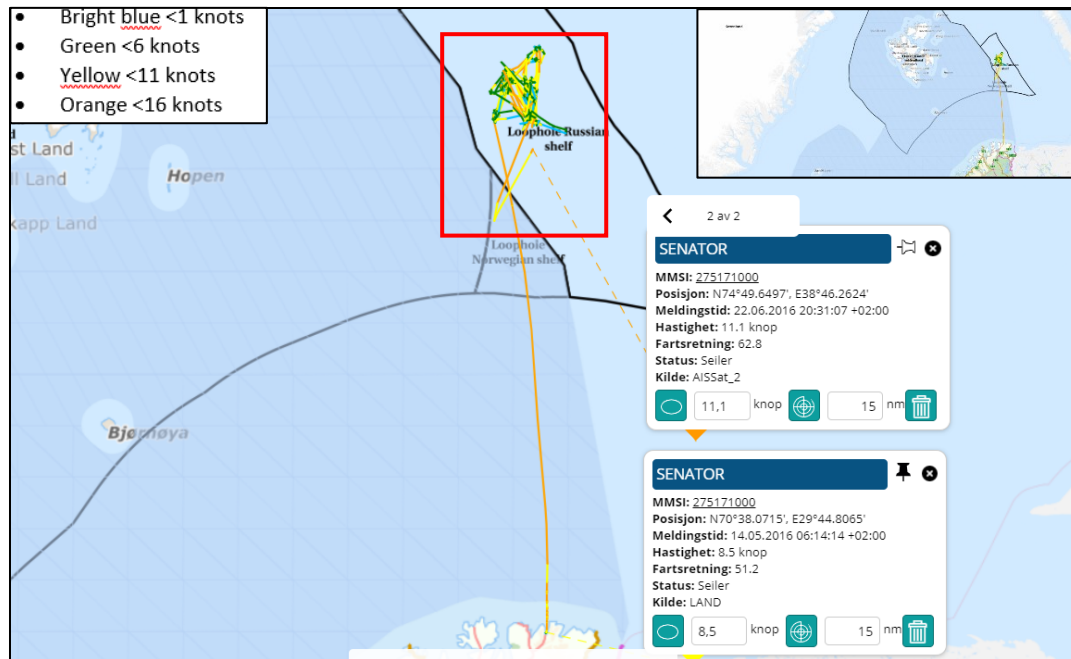
On this voyage, “Senator” also transshipped frozen snow crab (clusters) to the reefer “Nadir” on June 20<sup>th</sup> 2016 (211 282 kilos), June 30<sup>th</sup> 2016 (34 195 kilos) and on August 8<sup>th</sup> 2016 (122 951 kilos), and to the reefer “Nikolay Kasatkin” UEFY on July 16<sup>th</sup> 2016 (65 387 kilos). The transshipments were done while “Senator” was in the Barents Sea (in the Loop Hole). All kilos are calculated to live weight.

Because of “Senator”’s several transshipments of snow crab to the reefers “Nadir” and “Nikolay Kasatkin” during the voyage, this voyage will be divided into sequences. Each sequence is covering one transshipment and ends in a landing.



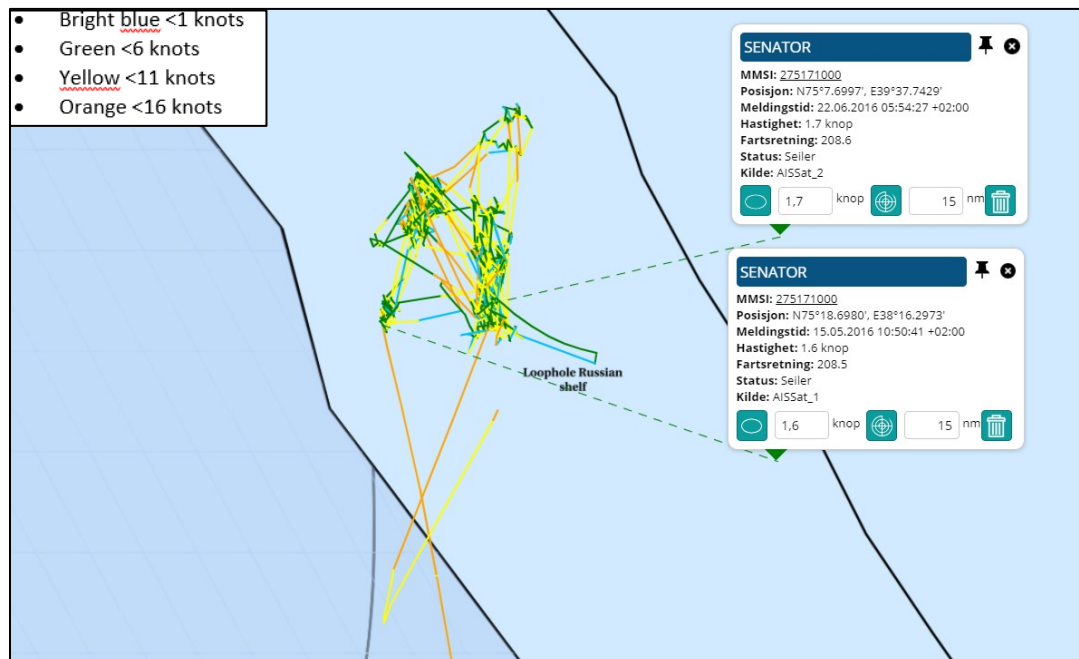
## 2.10.1 “Senator” harvest and transshipment to “Nadir” June 20<sup>th</sup> 2016

Figure 40 “Senator” tracks from May 14<sup>th</sup> to June 22<sup>th</sup> 2016, overview



“Senator” left Båtsfjord port on May 14<sup>th</sup> 2016 and sailed past the water column above the Norwegian continental shelf in the Loop Hole, northbound. The transshipment of 211 282 kilos snow crab in live weight to the reefer “Nadir” took place on the Russian continental shelf in the Loop Hole on June 20<sup>th</sup> 2016.

Figure 41 “Senator” from May 14<sup>th</sup> to June 22<sup>nd</sup> 2016, < 6 knots on the Russian continental shelf



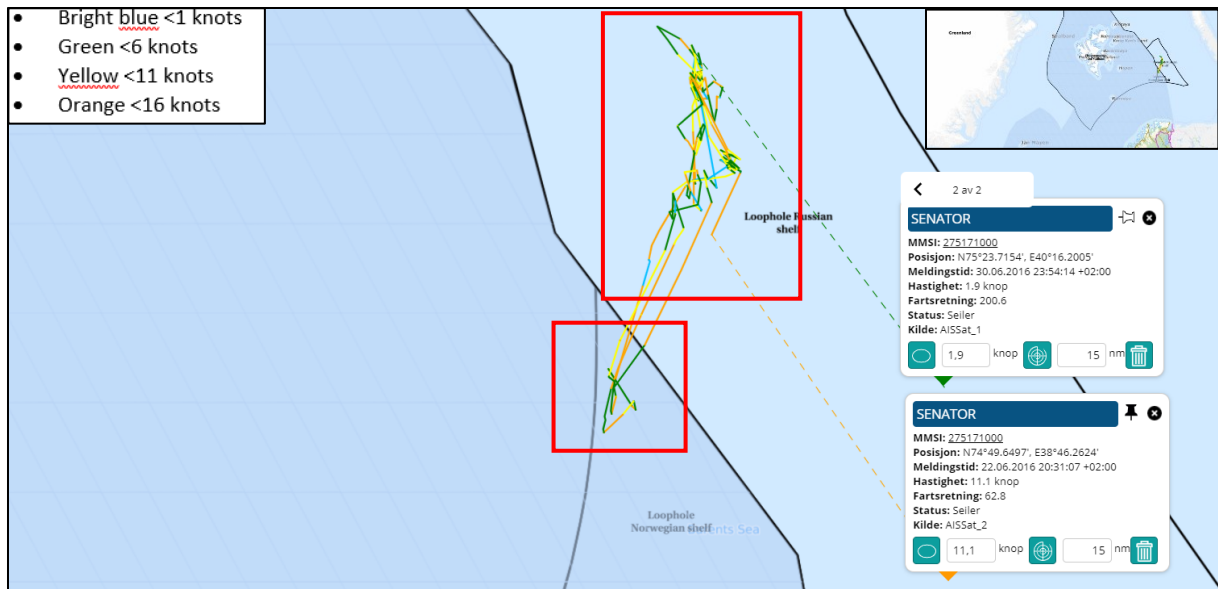
Russian continental shelf in the Loop Hole. “Senator” was speeding < 6 knots in the period from May 15<sup>th</sup> 2016 time 10:50 until June 22<sup>nd</sup> 2016 time 05:54.

2.10.1.1 "Senator" summary for transshipment June 20<sup>th</sup> 2016Figure 42 "Senator" summary for transshipment June 20<sup>th</sup> 2016

Voyage started from Båtsfjord port	Transhipped to "Nadir"	
14.05.2016	20.06.2016	
Entered Loophole Norwegian Shelf	15.05.2016 01:10	
Left Loophole Norwegian Shelf	15.05.2016 07:06	
Time on Norwegian Shelf (days:hours:minutes)		00:05:55
Period with speed < 6 knots from		
Period with speed < 6 knots to		
Time with speed < 6 knots (days:hours:minutes)		00:00:00
Entered Loophole Russian Shelf	15.05.2016 07:06	
Left Loophole Russian Shelf	22.06.2016 12:10	
Time on Russian Shelf (days:hours:minutes)		37:22:46
Period with speed < 6 knots from	15.05.2016 10:50	
Period with speed < 6 knots to	22.06.2016 05:54	
Time with speed < 6 knots (days:hours:minutes)		37:19:02
Entered Loophole Norwegian Shelf		
Left Loophole Norwegian Shelf		
Time on Norwegian Shelf (days:hours:minutes)		00:00:00
Period with speed < 6 knots from		
Period with speed < 6 knots to		
Time with speed < 6 knots (days:hours:minutes)		00:00:00
<b>Hours on Norwegian Shelf &lt; 6 knots</b>	<b>0</b>	
<b>Hours on Russian Shelf &lt; 6 knots</b>	<b>907,02</b>	
<b>Total hours &lt; 6 knots</b>	<b>907,02</b>	
<b>Percent time on Russian Shelf &lt; 6 knots</b>	<b>100,00 %</b>	
<b>Percent time on Norwegian Shelf &lt; 6 knots</b>	<b>0,00 %</b>	
<b>Snow crab landed/transhipped in product weight</b>	<b>131 231</b>	<b>"Nadir"</b>
<b>Snow crab landed/transhipped live in kg</b>	<b>211 282</b>	<b>20.06.2016</b>
<b>Factory or reefer</b>	<b>Båtsfjord Sentralfryselager AS</b>	
<b>Landingnote number and date</b>	<b>10581927</b>	<b>23.06.2016</b>

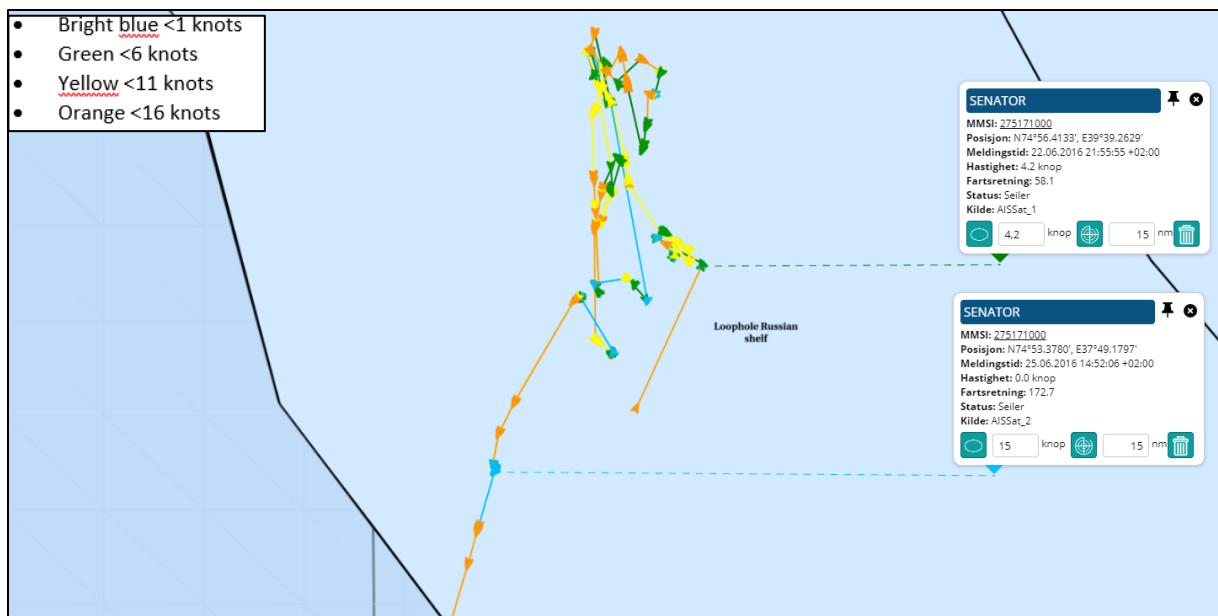
## 2.10.2 “Senator” harvest and transshipment to “Nadir” June 30<sup>th</sup> 2016

Figure 43 “Senator” tracks from June 23<sup>rd</sup> to June 30<sup>th</sup> 2016, overview



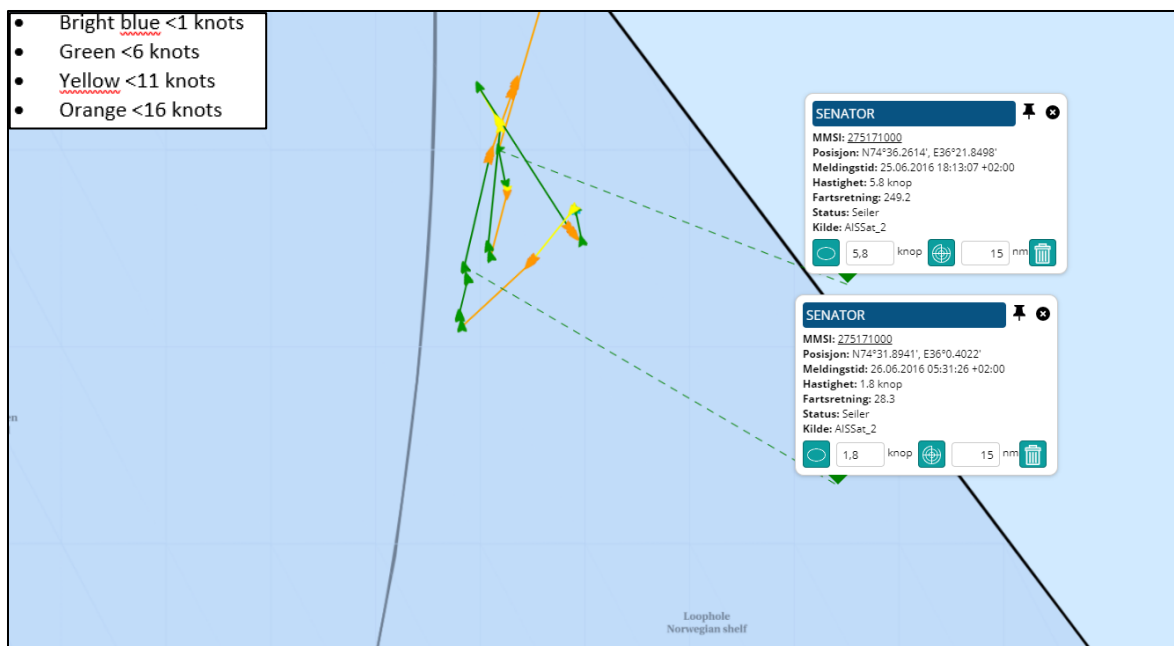
The transshipment of 34 195 kilos snow crab in live weight to the reefer “Nadir” took place on the Russian continental shelf in the Loop Hole on June 30<sup>th</sup> 2016. Between the previous transshipment and this transshipment, “Senator” undertook two voyages on the Norwegian continental shelf in the Loop Hole. The different periods “Senator” had on the Norwegian and Russian shelves in the Loop Hole will be shown in pictures below.

Figure 44 “Senator” from June 22<sup>th</sup> to June 25<sup>th</sup> 2016, < 6 knots on the Russian continental shelf



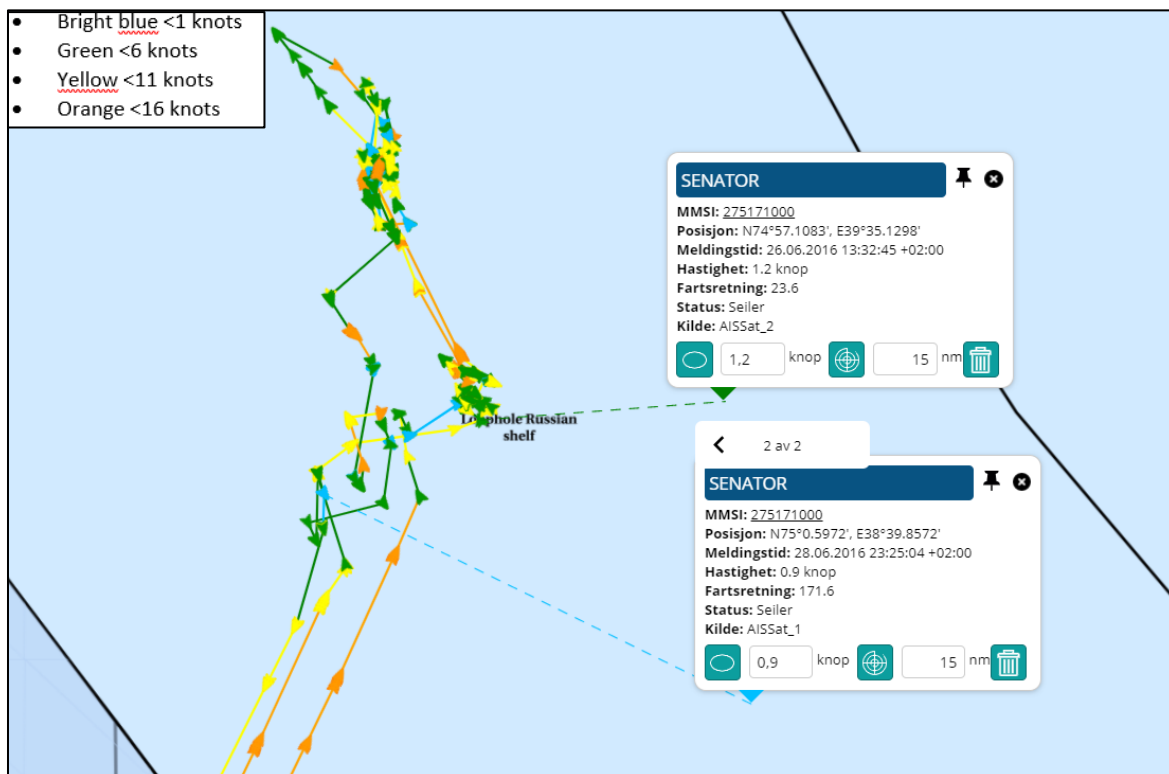
Russian continental shelf in the Loop Hole. “Senator” was speeding < 6 knots in the period from June 22<sup>nd</sup> 2016 time 21:55 until June 25<sup>th</sup> 2016 time 14:52. This is 37,74 percent of the total period < 6 knots in the Loop Hole for this voyage.

Figure 45 "Senator" from June 25<sup>th</sup> to June 26<sup>th</sup> 2016, < 6 knots on the Norwegian continental shelf



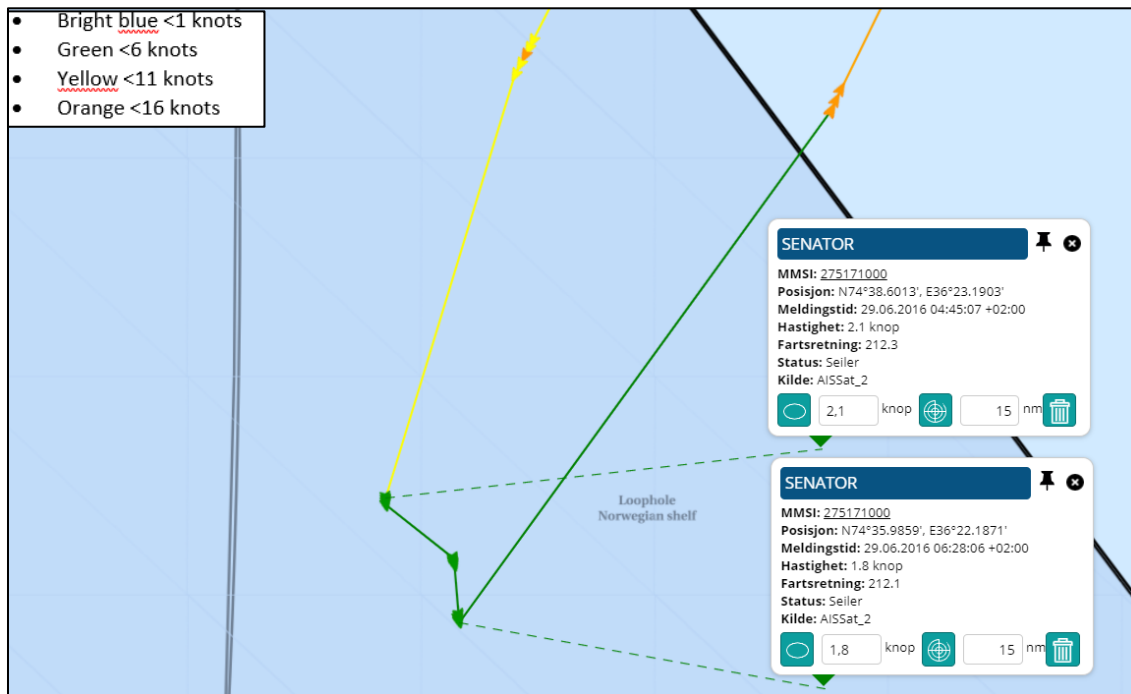
Norwegian continental shelf in the Loop Hole. "Senator" was speeding < 6 knots in the period from June 25<sup>th</sup> 2016 time 18:13 until June 26<sup>th</sup> 2016 time 05:31. This is 6,54 percent of the total period < 6 knots in the Loop Hole for this voyage. During this period, the "Senator" was engaged in snow crab harvesting on the Norwegian continental shelf.

Figure 46 "Senator" from June 26<sup>th</sup> to June 28<sup>th</sup> 2016, < 6 knots on the Russian continental shelf



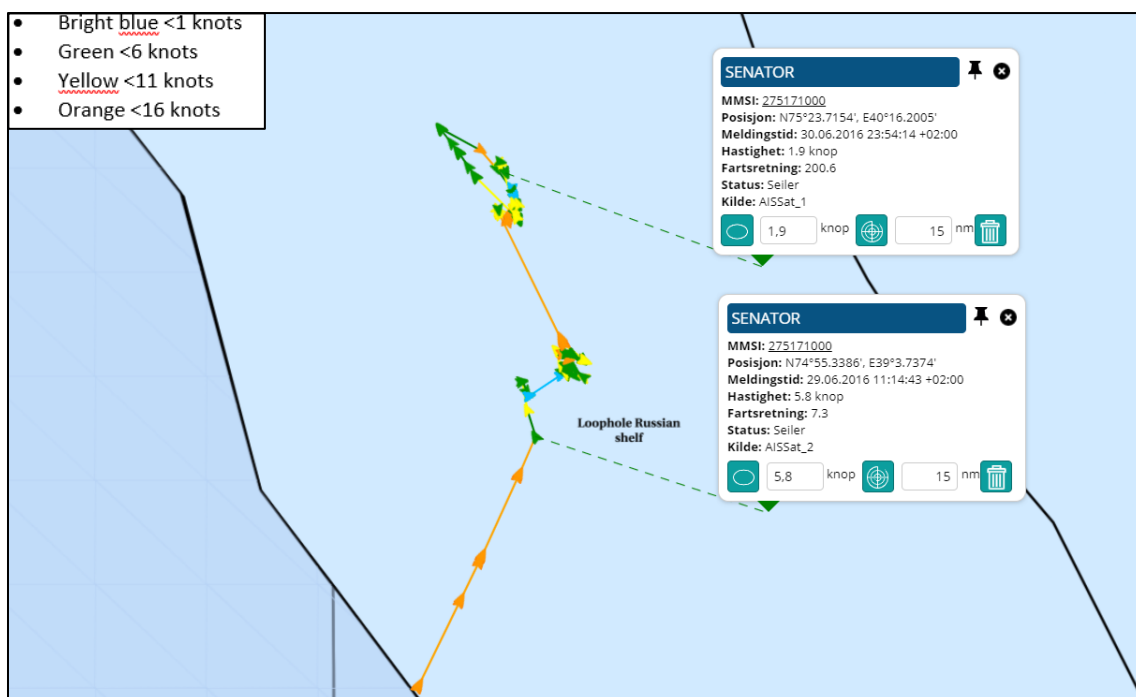
Russian continental shelf in the Loop Hole. “Senator” was speeding < 6 knots in the period from June 26<sup>th</sup> 2016 time 13:32 until June 28<sup>th</sup> 2016 time 23:25. This is 33,62 percent of the total period < 6 knots in the Loop Hole for this voyage.

Figure 47 “Senator” from June 26<sup>th</sup> to June 28<sup>th</sup> 2016, < 6 knots on the Norwegian continental shelf



Norwegian continental shelf in the Loop Hole. “Senator” was speeding < 6 knots in the period from June 29<sup>th</sup> 2016 time 04:45 until June 29<sup>th</sup> 2016 time 06:28. This is 0,83 percent of the total period < 6 knots in the Loop Hole for this voyage.

Figure 48 “Senator” from June 29<sup>th</sup> to June 30<sup>th</sup> 2016, < 6 knots on the Russian continental shelf



Russian continental shelf in the Loop Hole. "Senator" was speeding < 6 knots in the period from June 29<sup>th</sup> 2016 time 11:14 until June 30<sup>th</sup> 2016 time 23:54. This is 21,27 percent of the total period < 6 knots in the Loop Hole for this voyage.

#### 2.10.2.1 "Senator" summary for the transshipment June 30<sup>th</sup> 2016

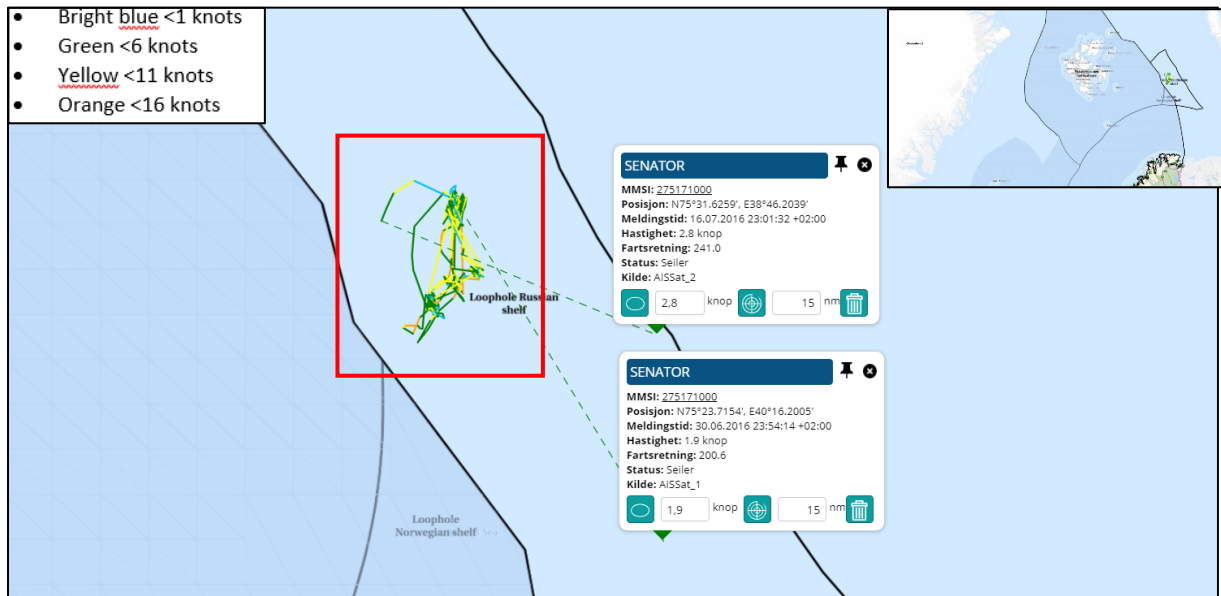
Figure 49 "Senator" summary for the transshipment June 30<sup>th</sup> 2016

Voyage started from Loop Hole	Transhipped to "Nadir"	
22.06.2016 20:31	30.06.2016	
Entered Loophole Russian Shelf	22.06.2016 20:19	
Left Loophole Russian Shelf	25.06.2016 18:13	02:21:54
Time on Russian Shelf (days:hours:minutes)		
Period with speed < 6 knots from	22.06.2016 21:55	
Period with speed < 6 knots to	25.06.2016 14:52	
Time with speed < 6.knots (days:hours:minutes)		02:16:56
Entered Loophole Norwegian Shelf	25.06.2016 18:13	
Left Loophole Norwegian Shelf	26.06.2016 08:20	
Time on Norwegian Shelf (days:hours:minutes)		00:14:06
Period with speed < 6 knots from	25.06.2016 18:13	
Period with speed < 6 knots to	26.06.2016 05:31	
Time with speed < 6 knots (days:hours:minutes)		00:11:18
Entered Loophole Russian Shelf	26.06.2016 08:20	
Left Loophole Russian Shelf	29.06.2016 03:07	02:18:47
Time on Russian Shelf (days:hours:minutes)		
Period with speed < 6 knots from	26.06.2016 13:32	
Period with speed < 6 knots to	28.06.2016 23:25	
Time with speed < 6.knots (days:hours:minutes)		02:09:52
Entered Loophole Norwegian Shelf	29.06.2016 03:07	
Left Loophole Norwegian Shelf	29.06.2016 08:00	
Time on Norwegian Shelf (days:hours:minutes)		00:04:53
Period with speed < 6 knots from	29.06.2016 04:45	
Period with speed < 6 knots to	29.06.2016 06:28	
Time with speed < 6 knots (days:hours:minutes)		00:01:42
Entered Loophole Russian Shelf	29.06.2016 08:00	
Left Loophole Russian Shelf	01.07.2016 00:00	01:15:59
Time on Russian Shelf (days:hours:minutes)		
Period with speed < 6 knots from	29.06.2016 11:14	
Period with speed < 6 knots to	30.06.2016 23:54	
Time with speed < 6.knots (days:hours:minutes)		01:12:39
<b>Hours on Norwegian Shelf &lt; 6 knots</b>	<b>12,6</b>	
<b>Hours on Russian Shelf &lt; 6 knots</b>	<b>158,47</b>	
<b>Total hours &lt; 6 knots</b>	<b>171,07</b>	
<b>Percent time on Russian Shelf &lt; 6 knots</b>	<b>92,63 %</b>	
<b>Percent time on Norwegian Shelf &lt; 6 knots</b>	<b>7,37 %</b>	
<b>Snow crab landed/transhipped in product weight</b>	<b>21 239</b>	<b>"Nadir"</b>
<b>Snow crab landed/transhipped live in kg</b>	<b>34 195</b>	<b>30.06.2016</b>
<b>Factory or reefer</b>	<b>Båtsfjord Sentralfryselager AS</b>	
<b>Landingnote number and date</b>	<b>10584322</b>	<b>07.07.2016</b>

The estimated harvest of snow crab on the Norwegian continental shelf is totally calculated to 7,37 percent of 65 387 kilos, i.e. 2 502 kilos on the Norwegian continental shelf in the Loop Hole.

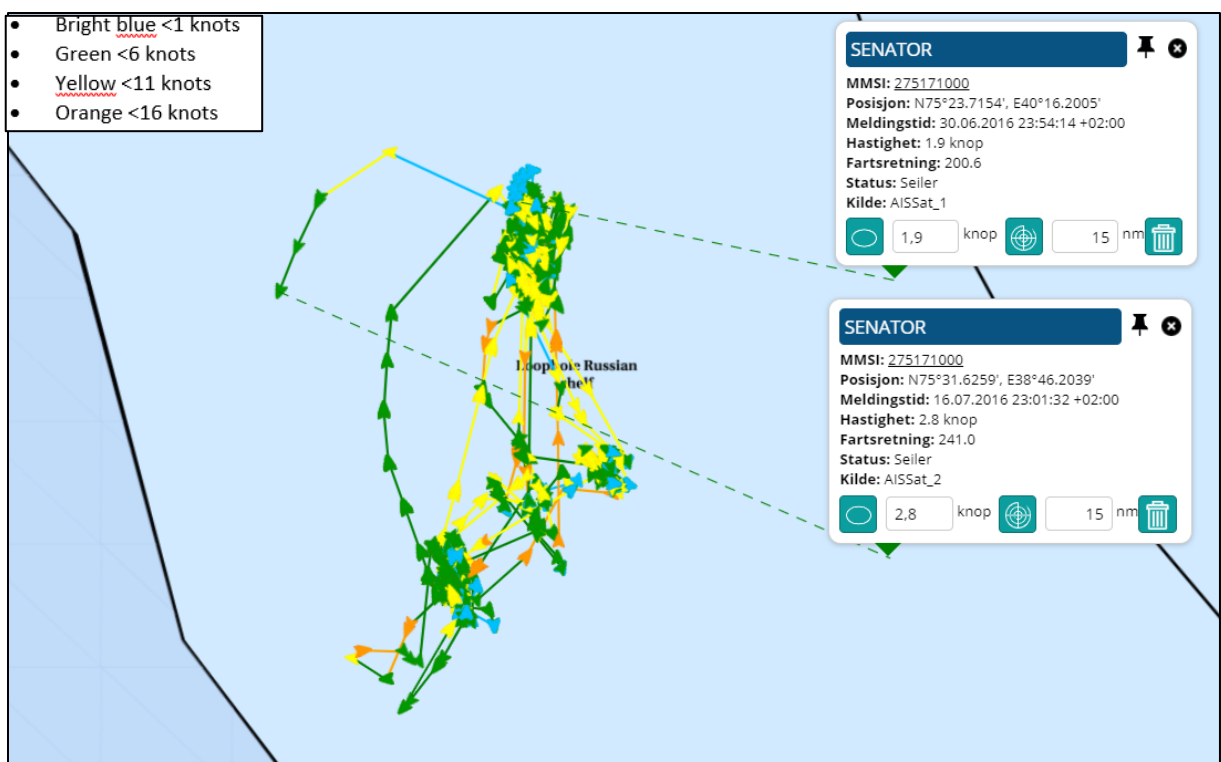
### 2.10.3 “Senator” transshipment to “Nikolay Kasatkin” July 16<sup>th</sup> 2016

Figure 50 “Senator” from June 30<sup>th</sup> to July 17<sup>th</sup> 2016, overview



The transshipment of 65 387 kilos snow crab in live weight to the reefer “Nikolay Kasatkin” took place on the Russian continental shelf in the Loop Hole on July 16<sup>th</sup> 2016. Between the previous transshipment to this transshipment, “Senator” was harvesting snow crab on the Russian continental shelf in the Loop Hole.

Figure 51 “Senator” from June 30<sup>th</sup> to July 17<sup>th</sup> 2016, < 6 knots on the Russian continental shelf



Russian continental shelf in the Loop Hole. "Senator" was speeding < 6 knots in the period from June 30<sup>th</sup> 2016 time 23:54 until July 16<sup>th</sup> 2016 time 23:01.

### 2.10.3.1 "Senator" summary transshipment July 16<sup>th</sup> 2016

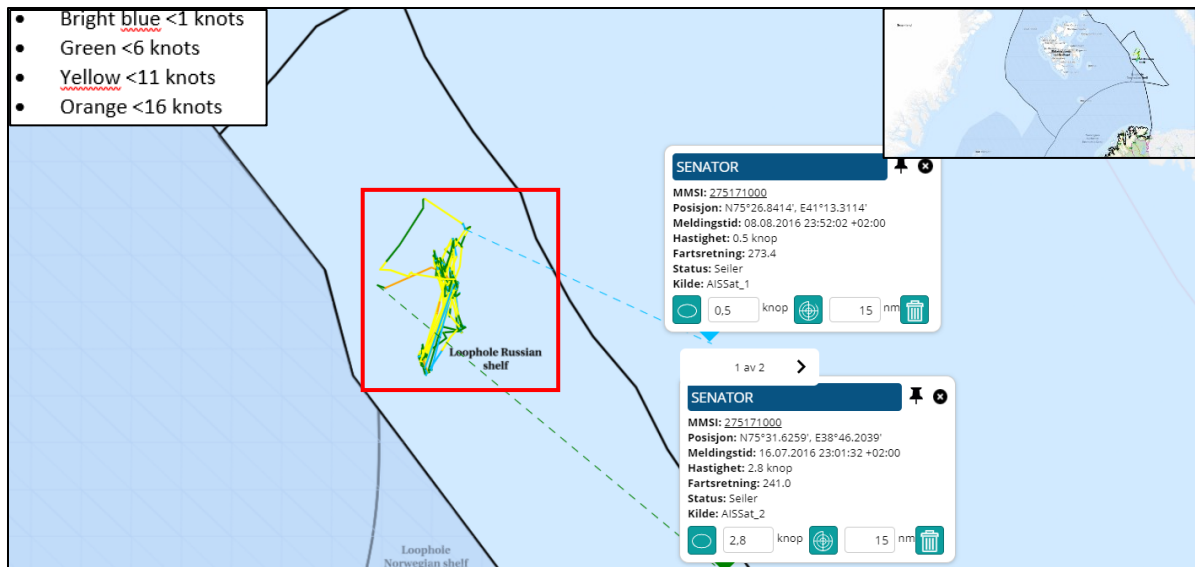
Figure 52 "Senator" summary transshipment July 16<sup>th</sup> 2016

Voyage started from Loop Hole	01.07.2016	Transshipped to "Nikolay Kasatkin"	16.07.2016
Entered Loophole Norwegian Shelf			
Left Loophole Norwegian Shelf			
Time on Norwegian Shelf (days:hours:minutes)			00:00:00
Period with speed < 6 knots from			
Period with speed < 6 knots to			
Time with speed < 6 knots (days:hours:minutes)			00:00:00
Entered Loophole Russian Shelf		01.07.2016 00:00	
Left Loophole Russian Shelf		17.07.2016 00:00	
Time on Russian Shelf (days:hours:minutes)			16:00:00
Period with speed < 6 knots from		30.06.2016 23:54	
Period with speed < 6 knots to		16.07.2016 23:01	
Time with speed < 6 knots (days:hours:minutes)			15:23:07
Entered Loophole Norwegian Shelf			
Left Loophole Norwegian Shelf			
Time on Norwegian Shelf (days:hours:minutes)			00:00:00
Period with speed < 6 knots from			
Period with speed < 6 knots to			
Time with speed < 6 knots (days:hours:minutes)			00:00:00
<b>Hours on Norwegian Shelf &lt; 6 knots</b>		<b>0</b>	
<b>Hours on Russian Shelf &lt; 6 knots</b>		<b>383,07</b>	
<b>Total hours &lt; 6 knots</b>		<b>383,07</b>	
<b>Percent time on Russian Shelf &lt; 6 knots</b>		<b>100,00 %</b>	
<b>Percent time on Norwegian Shelf &lt; 6 knots</b>		<b>0,00 %</b>	
<b>Snow crab landed/transhipped in product weight</b>		<b>40 613</b>	<b>"Nikolay Kasatkin"</b>
<b>Snow crab landed/transhipped live in kg</b>		<b>65 387</b>	
<b>Factory or reefer</b>	<b>Båtsfjord Sentralfryselager AS</b>		<b>16.07.2016</b>
<b>Landingnote number and date</b>		<b>10587000</b>	<b>20.07.2016</b>



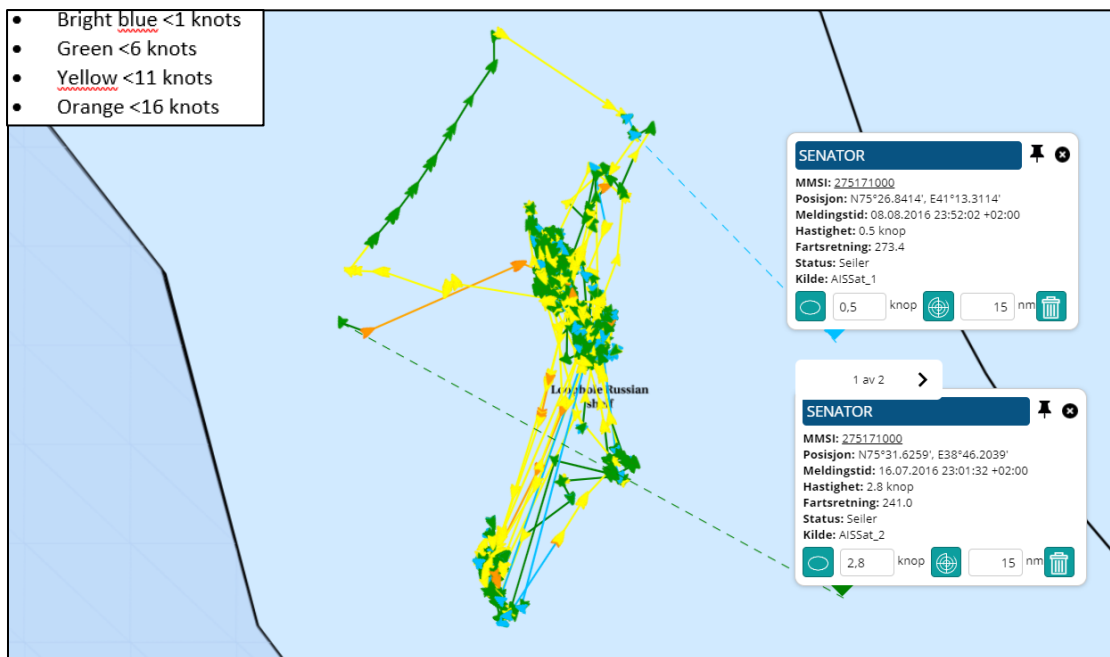
## 2.10.4 “Senator” transshipment to “Nadir” August 8<sup>th</sup> 2016

Figure 53 “Senator” from July 17<sup>th</sup> to August 9<sup>th</sup> 2016, overview



The last transshipment of 122 951 kilos snow crab in live weight to the reefer “Nadir” took place on the Russian continental shelf in the Loop Hole on August 8<sup>th</sup> 2016. Between the previous transshipment to this transshipment, “Senator” was harvesting snow crab on the Russian continental shelf in the Loop Hole.

Figure 54 “Senator” from July 17<sup>th</sup> to August 9<sup>th</sup> 2016, < 6 knots on the Russian continental shelf



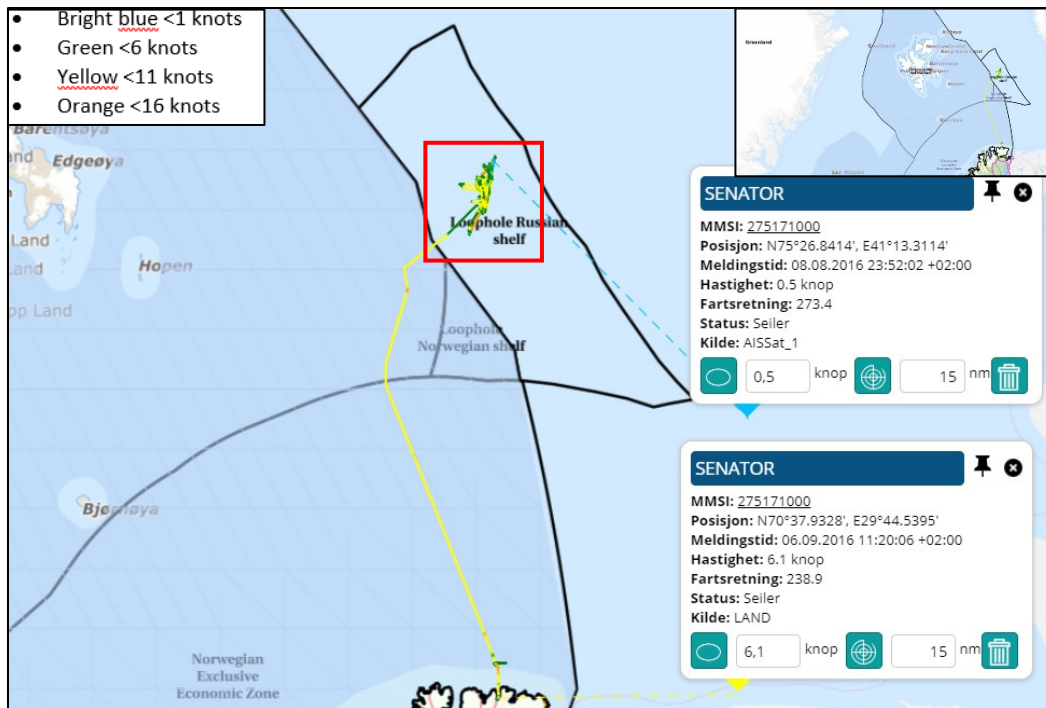
Russian continental shelf in the Loop Hole. “Senator” was speeding < 6 knots in the period from July 16<sup>th</sup> 2016 time 23:01 until August 8<sup>th</sup> 2016 time 23:52.

2.10.4.1 "Senator" summary transshipment August 8<sup>th</sup> 2016Figure 55 "Senator" summary transshipment August 8<sup>th</sup> 2016

Voyage started from Loop Hole	17.07.2016	Transhipped to "Nadir"	08.08.2018
Entered Loophole Norwegian Shelf			
Left Loophole Norwegian Shelf			
Time on Norwegian Shelf (days:hours:minutes)			00:00:00
Period with speed < 6 knots from			
Period with speed < 6 knots to			
Time with speed < 6 knots (days:hours:minutes)			00:00:00
Entered Loophole Russian Shelf	17.07.2016 00:00		
Left Loophole Russian Shelf	09.08.2016 00:00		
Time on Russian Shelf (days:hours:minutes)			23:00:00
Period with speed < 6 knots from	16.07.2016 23:01		
Period with speed < 6 knots to	08.08.2016 23:52		
Time with speed < 6 knots (days:hours:minutes)			23:00:50
Entered Loophole Norwegian Shelf			
Left Loophole Norwegian Shelf			
Time on Norwegian Shelf (days:hours:minutes)			00:00:00
Period with speed < 6 knots from			
Period with speed < 6 knots to			
Time with speed < 6 knots (days:hours:minutes)			00:00:00
Hours on Norwegian Shelf < 6 knots	0		
Hours on Russian Shelf < 6 knots	552,5		
Total hours < 6 knots	552,5		
Percent time on Russian Shelf < 6 knots	100,00 %		
Percent time on Norwegian Shelf < 6 knots	0,00 %		
Snow crab landed/transhipped in product weight	76 367	"Nadir"	
Snow crab landed/transhipped live in kg	122 951	08.08.2016	
Factory or reefer	Båtsfjord Sentralfryselager AS		
Landingnote number and date	10592854	12.08.2016	

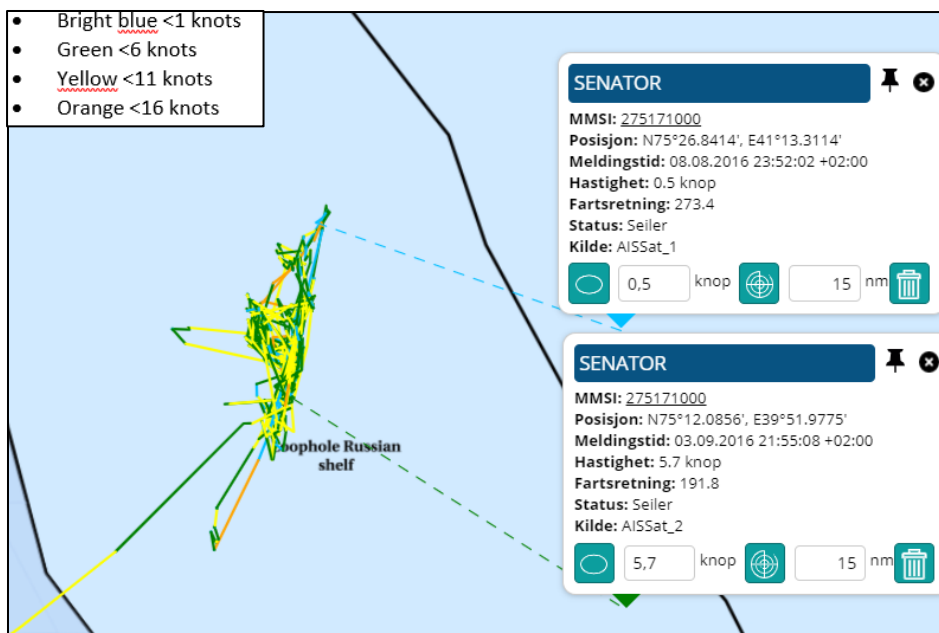
## 2.10.5 “Senator” landing September 6<sup>th</sup> 2016

Figure 56 “Senator” from August 8<sup>th</sup> to September 6<sup>th</sup> 2016, overview



Return voyage. After the last transshipment “Senator” had to the reefer “Nadir” and until the return voyage to Båtsfjord port, “Senator” was harvesting snow crab on the Russian continental shelf in the Loop Hole. “Senator” sailed through the Fisheries Protection Zone around Svalbard, southbound, but did not engage in any harvesting activities. “Senator” arrived in Båtsfjord port on September 6<sup>th</sup> 2016 and landed 118 556 kilos of snow crab in live weight.

Figure 57 “Senator” from August 8<sup>th</sup> to September 3<sup>rd</sup> 2016, < 6 knots on the Russian continental shelf



Russian continental shelf in the Loop Hole. "Senator" was speeding < 6 knots in the period from August 8<sup>th</sup> 2016 time 23:52 until September 3<sup>rd</sup> 2016 time 21:55.

#### 2.10.5.1 "Senator" summary of landing September 6<sup>th</sup> 2016

Figure 58 "Senator" summary landing September 6<sup>th</sup> 2016

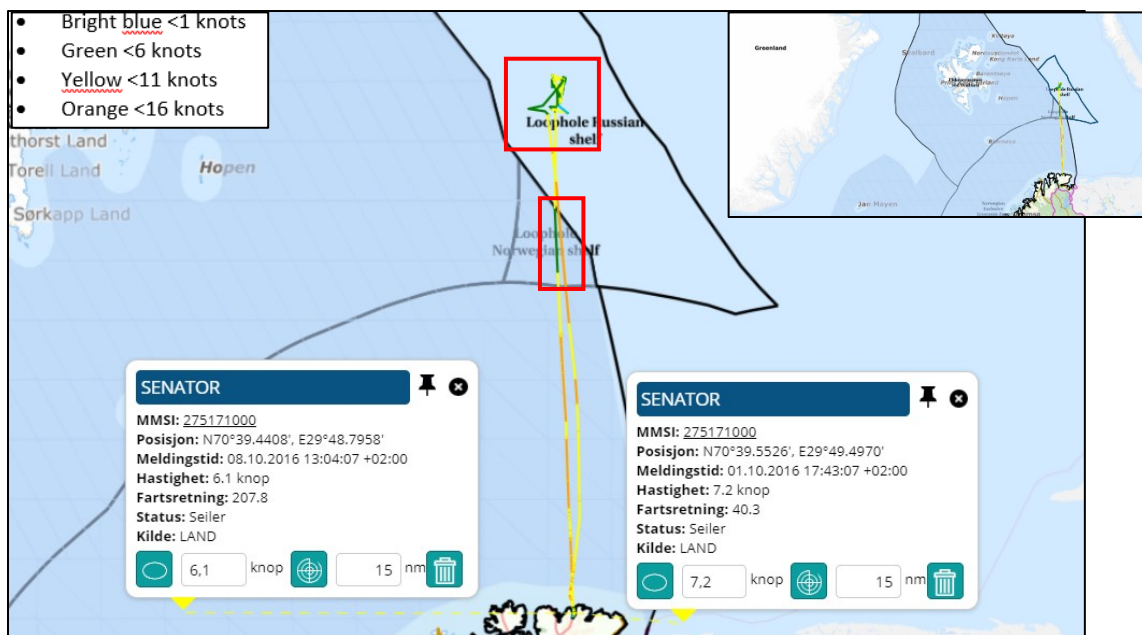
Voyage started from Loop Hole	Voyage ended in Båtsfjord port	
09.08.2016	06.09.2016	
Entered Loophole Norwegian Shelf		
Left Loophole Norwegian Shelf		
Time on Norwegian Shelf (days:hours:minutes)		00:00:00
Period with speed < 6 knots from		
Period with speed < 6 knots to		
Time with speed < 6 knots (days:hours:minutes)		00:00:00
Entered Loophole Russian Shelf	09.08.2016 00:00	
Left Loophole Russian Shelf	04.09.2016 19:14	
Time on Russian Shelf (days:hours:minutes)		26:19:14
Period with speed < 6 knots from	08.08.2016 23:52	
Period with speed < 6 knots to	03.09.2016 21:55	
Time with speed < 6.knots (days:hours:minutes)		25:22:03
Entered Loophole Norwegian Shelf		
Left Loophole Norwegian Shelf		
Time on Norwegian Shelf (days:hours:minutes)	TRANSITT SVALBARD AREA	00:00:00
Period with speed < 6 knots from		
Period with speed < 6 knots to		
Time with speed < 6 knots (days:hours:minutes)		00:00:00
Hours on Norwegian Shelf < 6 knots	0	
Hours on Russian Shelf < 6 knots	622,03	
Total hours < 6 knots	622,03	
Percent time on Russian Shelf < 6 knots	100,00 %	
Percent time on Norwegian Shelf < 6 knots	0,00 %	
Snow crab landed/transhipped in product weight	73 637	
Snow crab landed/transhipped live in kg	118 556	
Factory or reefer	Båtsfjord Sentralfryselager AS	
Landingnote number and date	4511762	06.09.2016

### 3. “Senator” after ending snow crab harvesting in the Loop Hole

The last landing of snow crab from “Senator” was on September 6<sup>th</sup> 2016 in Båtsfjord port. After this landing, “Senator” had one voyage to the Loop Hole in the Barents Sea with no landing of snow crab afterwards. This voyage is shown in the following:

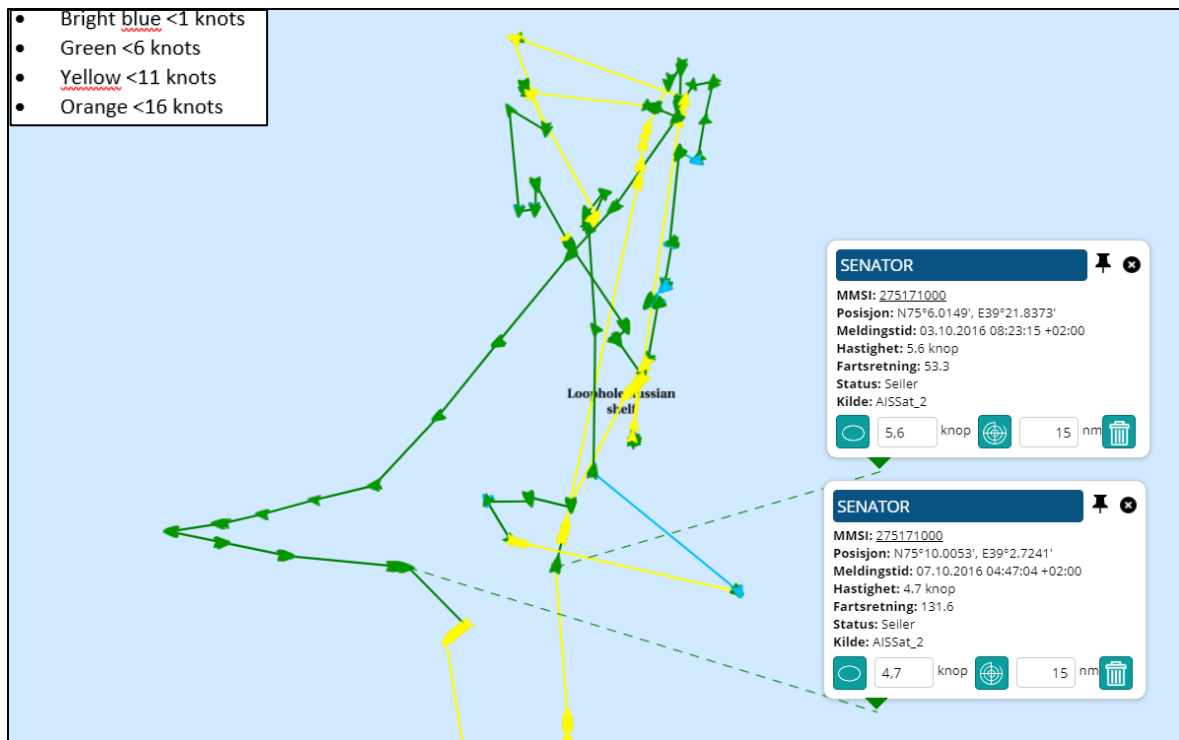
#### 3.1 “Senator” voyage 11 from October 1<sup>st</sup> to October 8<sup>th</sup> 2016

Figure 59 “Senator” voyage 11, overview



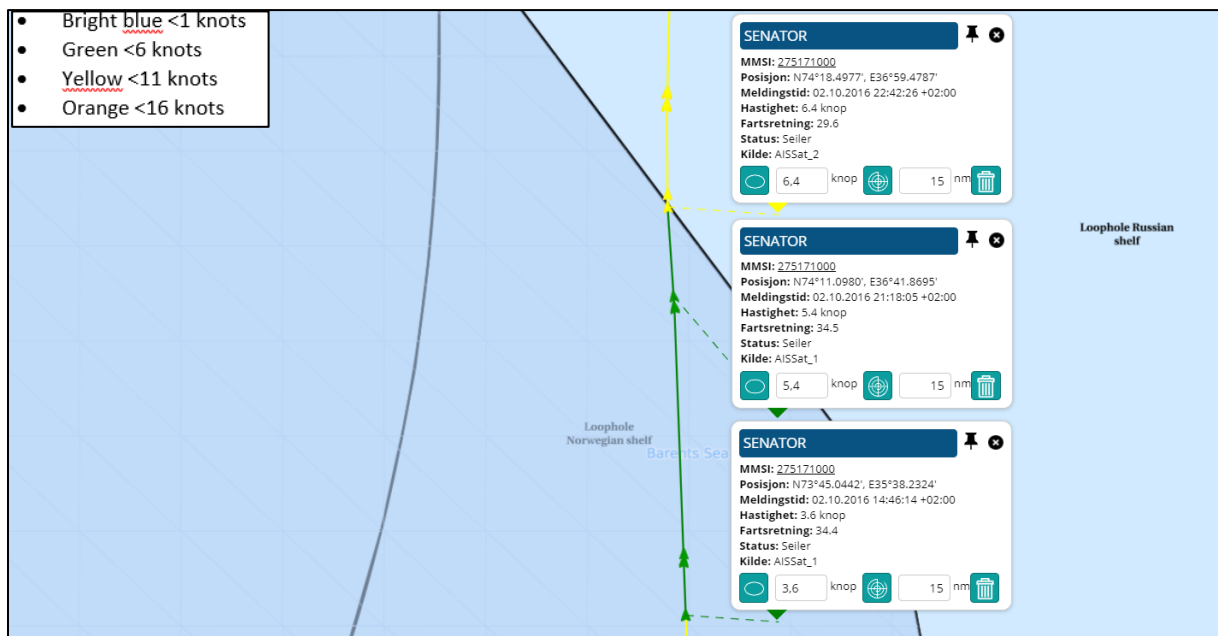
Voyage 11, overview. “Senator” left Båtsfjord port on October 1<sup>st</sup> 2016 and returned to Båtsfjord port on October 8<sup>th</sup> 2016. There was no landing or transshipment of catch after this voyage. The track shows that “Senator” sailed past the water column above the Norwegian continental shelf in the Loop Hole on this voyage, northbound and southbound. The green color of the track indicates that “Senator” was sailing with speed <6 knots in given periods on the Norwegian continental shelf.

Figure 60 "Senator" voyage 11, < 6 knots on the Russian continental shelf



Russian continental shelf in the Loop Hole. "Senator" was speeding < 6 knots in the period from October 3<sup>rd</sup> 2015 time 08:23 until October 7<sup>th</sup> 2015 time 04:47.

Figure 61 "Senator" voyage 11, < 6 knots on the Norwegian continental shelf



Norwegian continental shelf in the Loop Hole. "Senator" was speeding < 6 knots in the period from October 2<sup>nd</sup> 2015 time 14:45 until October 2<sup>nd</sup> 2015 time 21:18. There was no harvesting activity; as mentioned above, there was no landing or catch after this voyage.

## 3.1.1 “Senator” summary voyage 11

Figure 62 “Senator” summary voyage 11

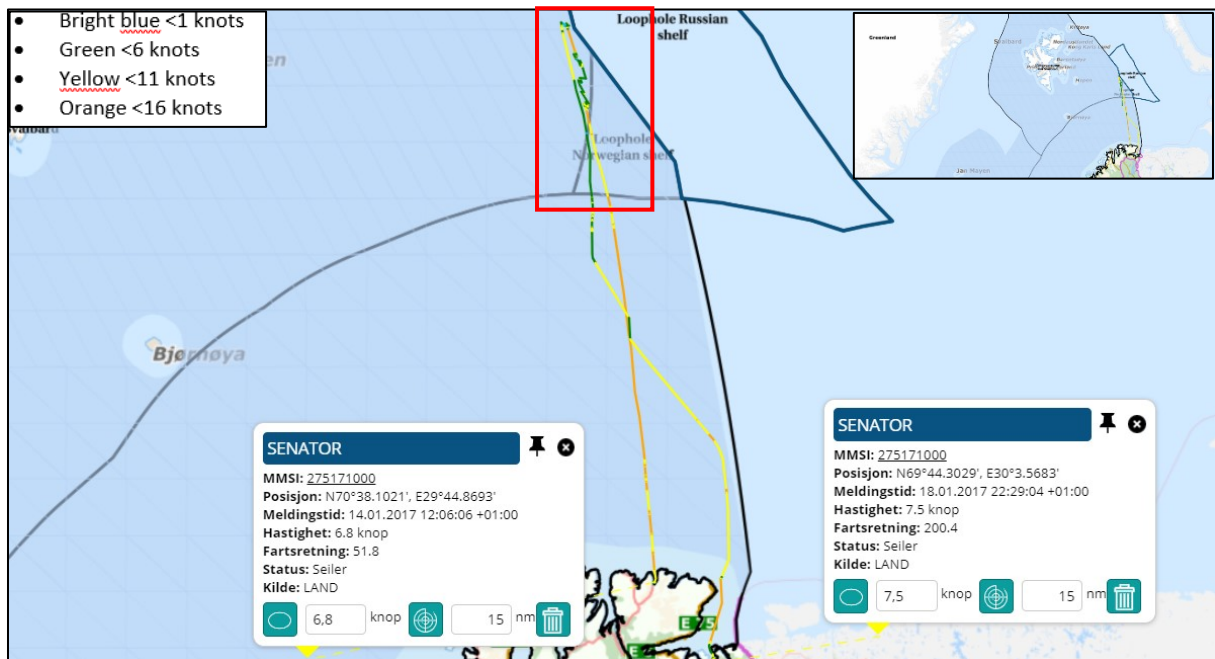
Voyage started from Loop Hole	Voyage ended in Båtsfjord port	
01.10.2006	08.10.2016	
Entered Loophole Norwegian Shelf	02.10.2016 14:45	
Left Loophole Norwegian Shelf	02.10.2016 22:54	
Time on Norwegian Shelf (days:hours:minutes)		00:08:08
Period with speed < 6 knots from	02.10.2016 14:45	
Period with speed < 6 knots to	02.10.2016 21:18	
Time with speed < 6 knots (days:hours:minutes)		00:06:32
Entered Loophole Russian Shelf	02.10.2016 22:54	
Left Loophole Russian Shelf	07.10.2016 14:21	
Time on Russian Shelf (days:hours:minutes)		04:15:27
Period with speed < 6 knots from	03.10.2016 08:23	
Period with speed < 6 knots to	07.10.2016 04:47	
Time with speed < 6 knots (days:hours:minutes)		03:20:23
Entered Loophole Norwegian Shelf	07.10.2016 14:21	
Left Loophole Norwegian Shelf	07.10.2016 19:23	
Time on Norwegian Shelf (days:hours:minutes)		00:05:02
Period with speed < 6 knots from		
Period with speed < 6 knots to		
Time with speed < 6 knots (days:hours:minutes)		00:00:00
Hours on Norwegian Shelf < 6 knots	6,32	
Hours on Russian Shelf < 6 knots	92,23	
Total hours < 6 knots	98,55	
Percent time on Russian Shelf < 6 knots	93,59 %	
Percent time on Norwegian Shelf < 6 knots	6,41 %	
Snow crab landed/transhipped in product weight	NO CATCH	
Snow crab landed/transhipped live in kg	NO CATCH	
Factory or reefer		
Landingnote number and date		

When “Senator” came to Båtsfjord port on October 8<sup>th</sup> 2016 it stayed there until January 14<sup>th</sup> 2017. “Senator” then went on a voyage to the Fisheries Protection Zone around Svalbard. This voyage is shown below.



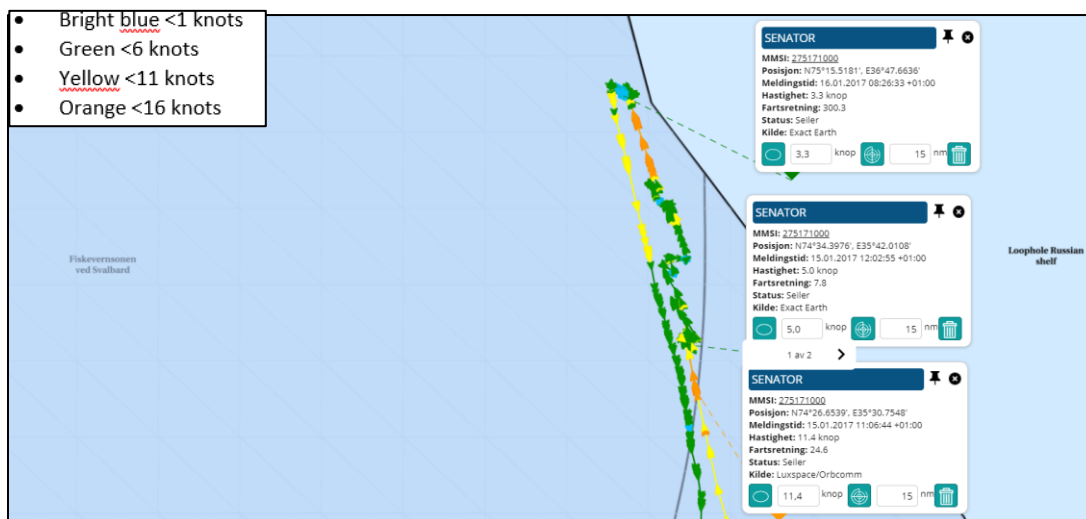
### 3.2 “Senator” voyage 12 from January 14<sup>th</sup> to January 18<sup>th</sup> 2017

Figure 63 “Senator” voyage 12, overview



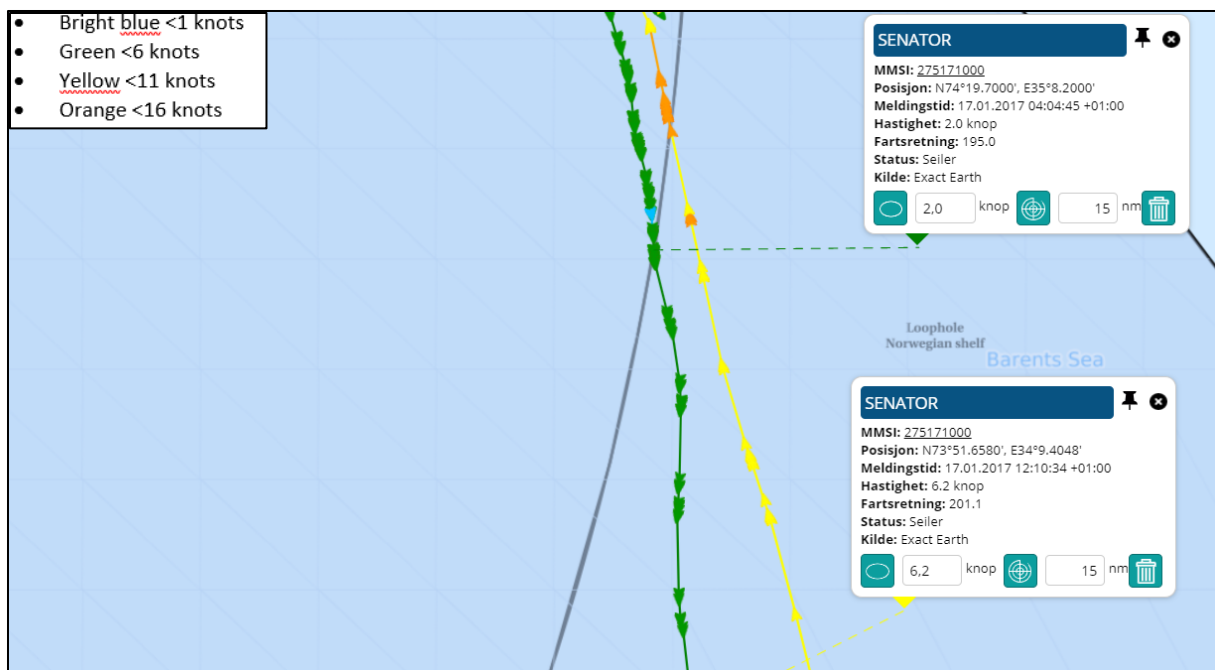
Voyage 12, overview. “Senator” left Båtsfjord port on January 14<sup>th</sup> 2016 and returned to Kirkenes port on January 18<sup>th</sup> 2016. There was no landing or transshipment of catch after this voyage. The track shows that “Senator” sailed past the water column above the Norwegian continental shelf in the Loop Hole on this voyage, northbound and southbound. The green color of the track indicates that “Senator” was sailing with speed <6 knots in given periods on the Norwegian continental shelf.

Figure 64 “Senator” voyage 12, Fisheries Protection Zone around Svalbard



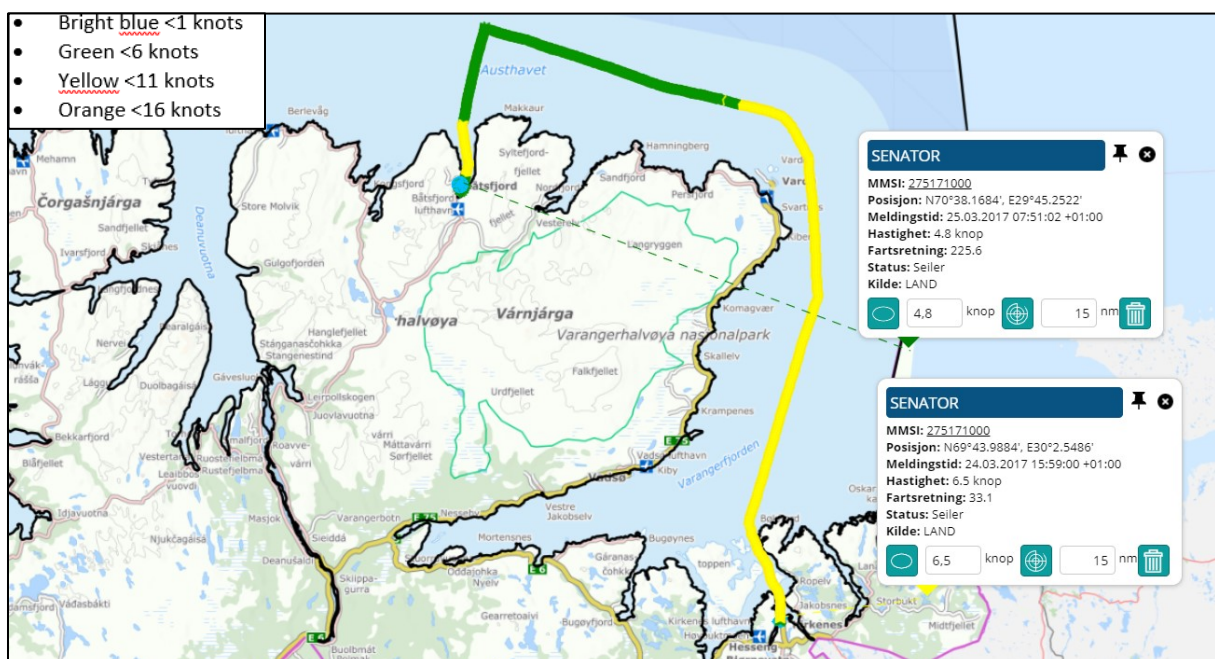
Fisheries Protection Zone around Svalbard. “Senator” arrived in the Fisheries Protection Zone around Svalbard January 15<sup>th</sup> 2017 time 11:06. On January 16<sup>th</sup> “Senator” was arrested by “KV Svalbard” in the Fisheries Protection Zone around Svalbard and escorted to Kirkenes port by the Norwegian Coast Guard.

Figure 65 "Senator" voyage 12, Norwegian continental shelf in the Loop Hole



On 17<sup>th</sup> January 2017, "Senator" was escorted southbound through the Norwegian continental shelf in the Loop Hole by Norwegian Coast Guard vessel "KV Svalbard".

Figure 66 "Senator" from Kirkenes to Båtsfjord



From January 18<sup>th</sup> until March 24<sup>th</sup> in 2017 "Senator" was laid up in Kirkenes port. Then "Senator" sailed to Båtsfjord port and have been laid up there since March 25<sup>th</sup> 2017.

Inspeksjoner														
Enhet	Inspeksjons-nr.	Felles inspeksjons-nr.	Dato	Fartøy	Kalle-signal	Registrerings-merke	Flagg-stat	Kaptein	Kontroll-punkt område	Posisjon	Saksavgjørelse	Merknad (Dagenerell forrapport Fst angst Defansistabok Beredskap)	Opp-brakt	Brudd-koder
Fiskeridirektoratet		94534	16.07.2013	OTTO	YLAC	LV174K	LVA			-	Intet	G: kartlegging av utførelse av rekkefiske fra utenlandske trillere og evt. innledning av livtorsk i rekkefiske.	no	
Fiskeridirektoratet		108449	22.06.2015	SENATOR	YLAC	LVR0834	LVA	Rafael Uzakov		-	Intet	G: Havneetskontroll G: Inspektør til kai i Båstved.	no	
KV FARM	L8HF 16 082	114331	17.09.2016	SENATOR	YLAC	LVR0834	LVA	Rafael Uzakov		7038N-02944E	Anmeldelse	Fartøyet er besluttet oppbragt for brudd på FOR-2014-12-19-1836 med side ending FOR-2015-12-22-1833. Se vedlegg	yes	1
KV SVALBARD	L8SV 17 006	116044	16.01.2017	SENATOR	YLAC	LVR0834	LVA	Rafael Uzakov		7515N-03647E	Anmeldelse	G: The vessel will be escorted by Hecoy Svalbard to Kikenes harbor for centering Norwegian act and regulation. R: The vessel is suspected for illegal fishery of snow crab on the Norwegian continental shelf. F: No catch on board D: The vessel is sending DCA reports to Latvian FMC (Rip). B: 13 chains of approx 200 pots each in sea (2594 pots total). 11 chains still on board vessel. G: Inspected at port in Kikenes before departure for the protection zone around Svalbard.	yes	1 31
KV FARM	L8HF 17 018	116384	07.02.2017	SENATOR	YLAC	LVR0834	LVA	Rafael Uzakov		6943N-03003E	Intet	- Captain ordered to send AIS and VMS signal during the voyage. - Captain ordered to respond on all calls from Norwegian Coastguard on VHF ch. 16/10 or M/F/HF 2182. - Cargo hold inspected, no catch on board.		

Lovbrudd	Startposisjon	Sluttposisjon	Sone	Fiskerirute	Startdybde	Sluttdybde	Varighet	Hovedfiskeri	Redskap	Lengde-måling	Otolitter	Total levende vekt
	-	-						Reke (dyppanns )				
	-	-						Snøkrabbe				
Fisket uten lisens/konsejsej	-	-	NOR	0306				Snøkrabbe	Teiner			
Fisket uten lisens/konsejsej Kystvaktloven	-	-	XSV					Snøkrabbe	Teiner			
	-	-	NOR	0302				Snøkrabbe	Teiner			

Inspection February 7<sup>th</sup> 2017 by “KV Farm”: Inspected at port in Kirkenes before departure to the Fisheries Protection Zone around Svalbard. The captain was ordered to send AIS and VMS signal during the voyage. Furthermore, the captain was ordered to respond on all calls from the Norwegian Coastguard on VHF ch 16/10 or MF/Hf 2182. Cargo hold inspected. There was no catch on board.

## Attachment with method, sources, terms and abbreviations.