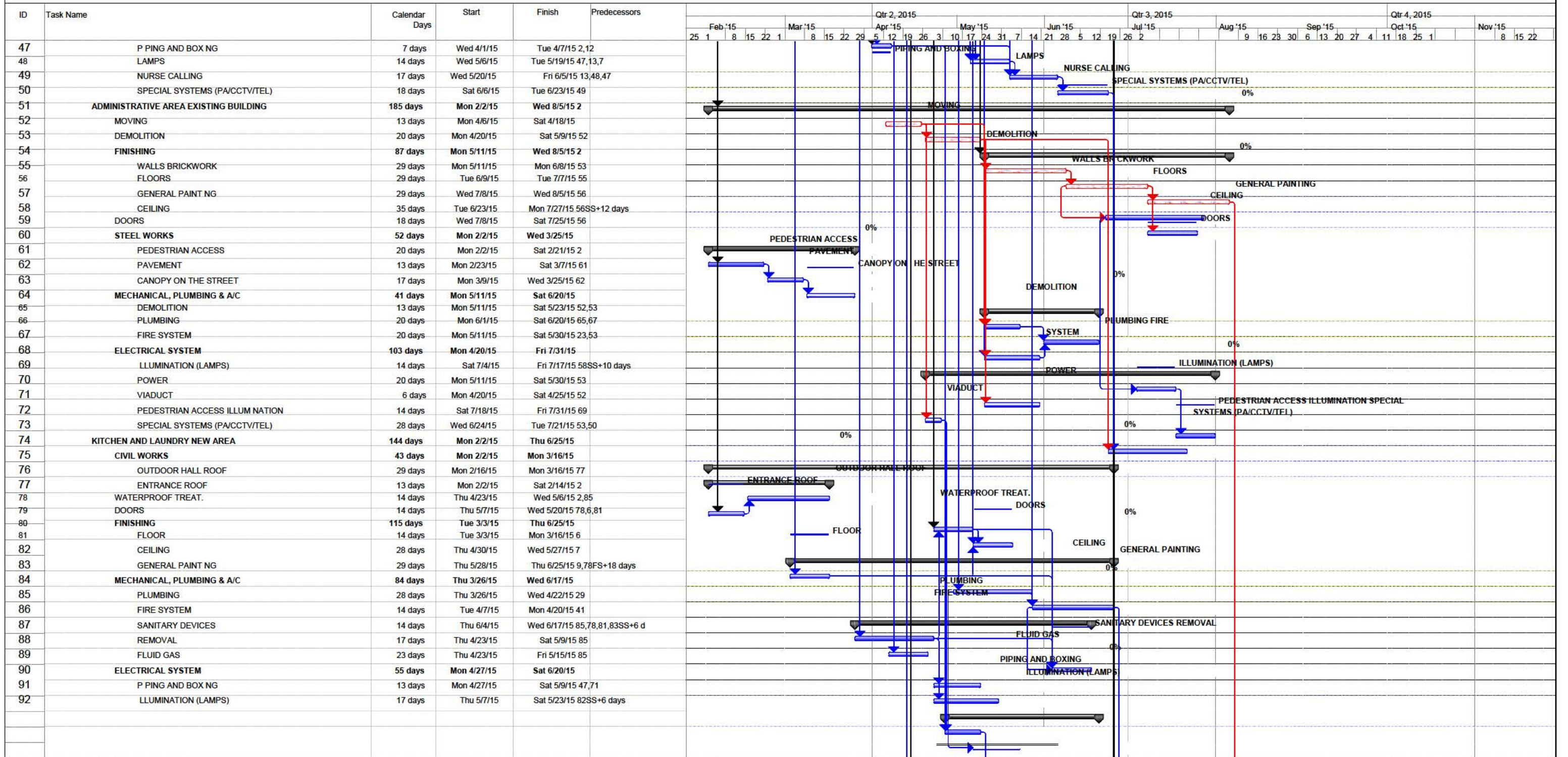


REPLY NOTE 007-DI-DIS-2015 DATE: 16-

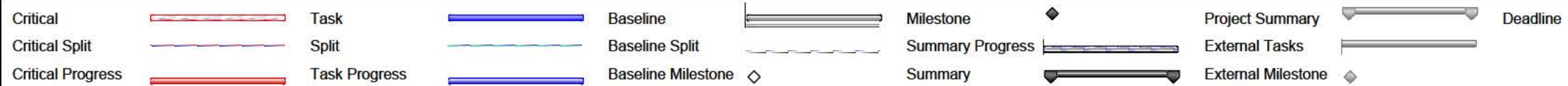
JANUARY-2015

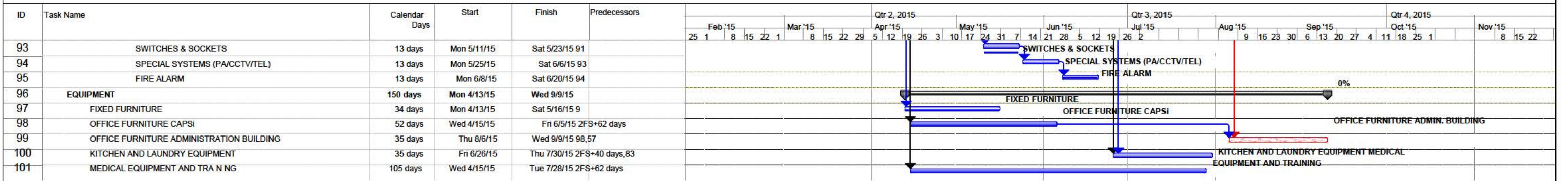
Critical		Task		Baseline		Milestone		Project Summary		Deadline	
Critical Split		Split		Baseline Split		Summary Progress		External Tasks			
Critical Progress		Task Progress		Baseline Milestone		Summary		External Milestone			





REPLY NOTE 007-DI-DIS-2015 DATE: 16-JANUARY-2015





REPLY NOTE 007-DI-DIS-2015 DATE: 16-JANUARY-2015

<b>Critical</b>		Task		Baseline		Milestone		Project Summary		Deadline	
<b>Critical Split</b>		Split		Baseline Split		Summary Progress		External Tasks			
<b>Critical Progress</b>		Task Progress		Baseline Milestone		Summary		External Milestone			





ID	Task Name	Dias Calendarios	Start	Finish	Predecessors	Qtr 2, 2015												Qtr 3, 2015												Qtr 4, 2015											
						Feb '15				Mar '15				Apr '15				May '15				Jun '15				Jul '15				Aug '15				Sep '15				Oct '15			
1	<b>MINSA CAPSi - RIO SERENO</b>	<b>220 days</b>	<b>Mon 2/2/15</b>	<b>Wed 9/9/15</b>		0%																																			
2	REANUDACIÓN DE LABORES	0 days	Mon 2/2/15	Mon 2/2/15		0%																																			
3	<b>CONTRATO ORIGINAL</b>	<b>93 days</b>	<b>Mon 2/2/15</b>	<b>Tue 5/5/15</b>		0%																																			
4	URBANIZACIÓN	69 days	Mon 2/2/15	Sat 4/11/15 2		0%																																			
5	<b>ACABADOS</b>	<b>87 days</b>	<b>Mon 2/2/15</b>	<b>Wed 4/29/15</b>		0%																																			
6	PISOS	29 days	Mon 2/2/15	Mon 3/2/15 2		0%																																			
7	CIELO RASO	87 days	Mon 2/2/15	Wed 4/29/15 2		0%																																			
8	PUERTAS Y VENTANAS	46 days	Mon 2/2/15	Thu 3/19/15 2		0%																																			
9	PINTURA GENERAL	69 days	Mon 2/2/15	Sat 4/11/15 2		0%																																			
10	<b>SISTEMA ELÉCTRICO INTERIOR</b>	<b>93 days</b>	<b>Mon 2/2/15</b>	<b>Tue 5/5/15</b>		0%																																			
11	TUBERÍA Y CAJERÍA	0 days	Mon 2/2/15	Mon 2/2/15 2		0%																																			
12	ALAMBRADO	47 days	Fri 2/13/15	Tue 3/31/15 2FS+10 days, 11		0%																																			
13	ILUMINACIÓN (LAMPARAS)	35 days	Wed 4/1/15	Tue 5/5/15 12,7SS+15 days		0%																																			
14	INTERRUPTORES & RECEPTACULOS	23 days	Tue 3/3/15	Wed 3/25/15 12SS+15 days		0%																																			
15	TABLEROS & EQUIPOS DISTRIBUCIO	69 days	Mon 2/2/15	Sat 4/11/15 2		0%																																			
16	GROUNDING & PARARAYOS	34 days	Mon 2/2/15	Sat 3/7/15 2		0%																																			
17	PLANTA ELÉCTRICA	34 days	Mon 2/2/15	Sat 3/7/15 2		0%																																			
18	<b>SISTEMAS ESPECIALES</b>	<b>93 days</b>	<b>Mon 2/2/15</b>	<b>Tue 5/5/15 2</b>		0%																																			
19	TUBERIAS & CAJERIAS	23 days	Mon 2/2/15	Tue 2/24/15 11		0%																																			
20	SISTEMA PA/CCTV/TEL	70 days	Wed 2/25/15	Tue 5/5/15 19,7SS+15 days		0%																																			
21	<b>SISTEMA MECÁNICO &amp; PLOMERÍA</b>	<b>40 days</b>	<b>Mon 2/2/15</b>	<b>Fri 3/13/15 2</b>		0%																																			
22	SISTEMA DE AIRE ACONDICIONADO	34 days	Mon 2/2/15	Sat 3/7/15 2		0%																																			
23	SISTEMA CONTRA INCENDIO	23 days	Thu 2/19/15	Fri 3/13/15 2,7SS+15 days		0%																																			
24	ALARMA DE FUEGO	23 days	Thu 2/19/15	Fri 3/13/15 2,7SS+15 days		0%																																			
25	<b>PLOMERÍA</b>	<b>52 days</b>	<b>Mon 2/2/15</b>	<b>Wed 3/25/15 2</b>		0%																																			
26	SANITARIA	6 days	Mon 2/2/15	Sat 2/7/15 2		0%																																			
27	AGUA POTABLE	6 days	Mon 2/2/15	Sat 2/7/15 2		0%																																			
28	PLUVIAL	6 days	Mon 2/2/15	Sat 2/7/15 2		0%																																			
29	EQUIPOS SANITARIOS	23 days	Tue 3/3/15	Wed 3/25/15 26,27,28,6		0%																																			
30	SISTEMA DE BOMBEO DE AGUA POTABLE & INCE	23 days	Mon 2/9/15	Tue 3/3/15 26,27,28		0%																																			
31	<b>ADENDA</b>	<b>185 days</b>	<b>Mon 2/2/15</b>	<b>Wed 8/5/15</b>		0%																																			
32	<b>AREA PARTO Y HOSPITALIZACION</b>	<b>113 days</b>	<b>Sat 3/14/15</b>	<b>Sat 7/4/15</b>		0%																																			
33	PUERTAS	23 days	Fri 3/20/15	Sat 4/11/15 8,6		0%																																			
34	<b>MECANICA, PLOMERIA &amp; A/A</b>	<b>101 days</b>	<b>Thu 3/26/15</b>	<b>Sat 7/4/15 2</b>		0%																																			
35	PLOMERIA	7 days	Thu 3/26/15	Wed 4/1/15 25		0%																																			
36	APARATOS SANITARIO	14 days	Thu 4/2/15	Wed 4/15/15 35,29		0%																																			
37	SUMINISTRO DE UMAS	0 days	Mon 4/27/15	Mon 4/27/15		0%																																			
38	A/A CONSULTA EXTERNA	23 days	Mon 4/27/15	Tue 5/19/15 22,37		0%																																			
39	A/A PARTO Y HOSPITALIZACIÓN	23 days	Wed 5/20/15	Thu 6/11/15 38		0%																																			
40	A/A VESTÍBULO PRINCIPAL	23 days	Fri 6/12/15	Sat 7/4/15 39		0%																																			
41	SISTEMA CONTRA INCENDIO	24 days	Sat 3/14/15	Mon 4/6/15 23		0%																																			
42	ALARMA DE FUEGO	24 days	Sat 3/14/15	Mon 4/6/15 23		0%																																			
43	<b>GASES MÉDICOS</b>	<b>35 days</b>	<b>Thu 4/16/15</b>	<b>Wed 5/20/15 2</b>		0%																																			
44	ENTREGA EQUIPO	0 days	Thu 4/16/15	Thu 4/16/15		0%																																			
45	INSTALACIÓN DE SISTEMAS	35 days	Thu 4/16/15	Wed 5/20/15 44		0%																																			
46	<b>SISTEMA ELECTRICO</b>	<b>84 days</b>	<b>Wed 4/1/15</b>	<b>Tue 6/23/15 2</b>		0%																																			

RESPUESTA NOTA 007-DI-DIS-2015  
FECHA: 16 DE ENERO DE 2015

Critical		Task		Baseline		Milestone		Project Summary		Deadline	
Critical Split		Split		Baseline Split		Summary Progress		External Tasks			
Critical Progress		Task Progress		Baseline Milestone		Summary		External Milestone			







